







In This Issue

1. [Map Gallery](#)
2. [Parcel Line Dimensioning](#)
3. [ArcGIS: Adding Base Maps to Your Map Project](#)

1. Map Gallery

CTRL-Click on a thumbnail to view, download or print the full-sized map

Concord's Dogs		The Dog Park Feasibility Committee asked for a webmap layer of Concord dogs by size, based on Dog License information from the Town Clerk. *
Bike Rental Stations		The Rotary Club of Concord commissioned this map, to illustrate the locations of two planned Hubway Bike Share stations.
Visitor Handouts		The Visitor Center (re-opening soon!) requested several handout-sized maps.
Visitor Center Poster		The VC also requested some wallpaper...

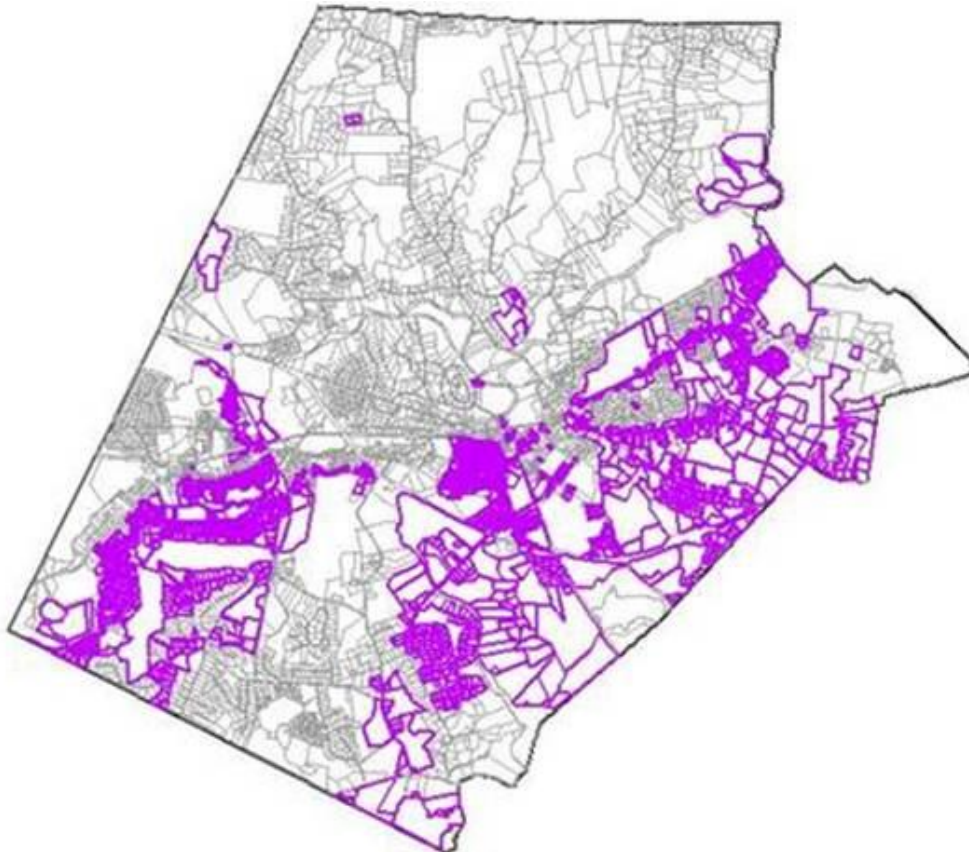
* For caninophiles: Most popular breed: Labrador Retriever (230)
 Most popular dog name in Concord: Daisy (24)
 Number of Labs named Daisy: Three

2. Parcel Line Dimensioning

As reported in January 2017, Concord's tax maps do not yet show the length of each parcel line segment.



Our contractor, Cornerstone, has been making great progress on this long-term project. From 7% complete at that time, the project is now over **27%** complete. Here's what that looks like:



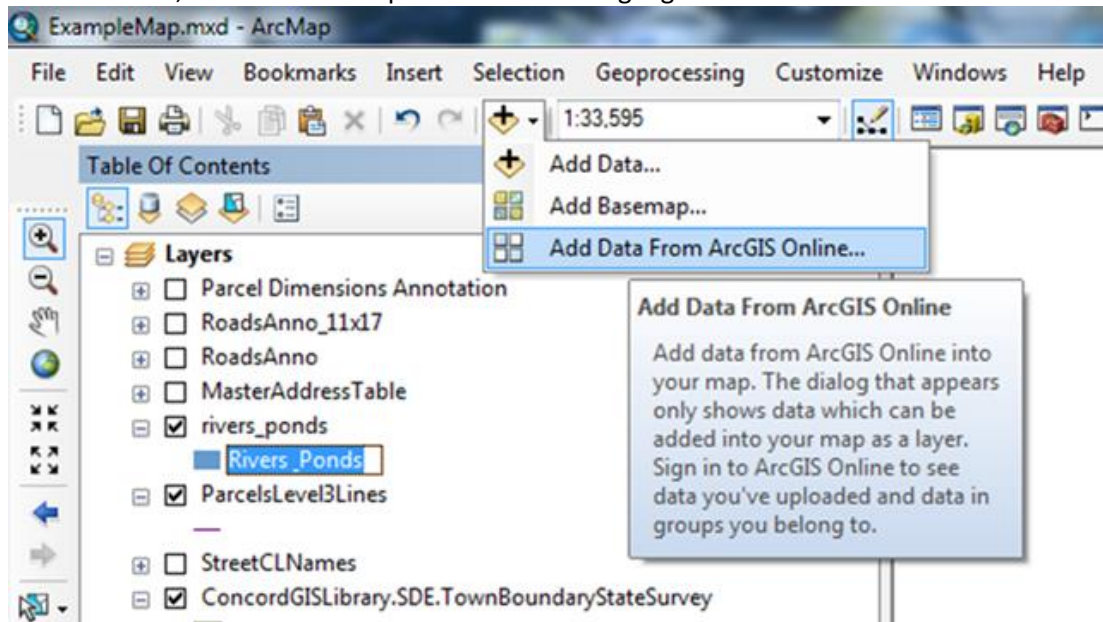
All **purple parcel lines** now have their deed-based length as an attribute

[Back to Top](#)

3. ArcGIS: How to Add a Detailed Base Map from MassGIS

Ever want an easy way to add detailed data for surrounding towns to your map of Concord? How about for the whole Commonwealth? You don't need to re-invent the wheel, nor do you need to build it layer by layer, because this (and dozens of other map layers) are available freely online to directly add to your maps, and you don't even need to download or store anything locally. How, you ask? Just do this:

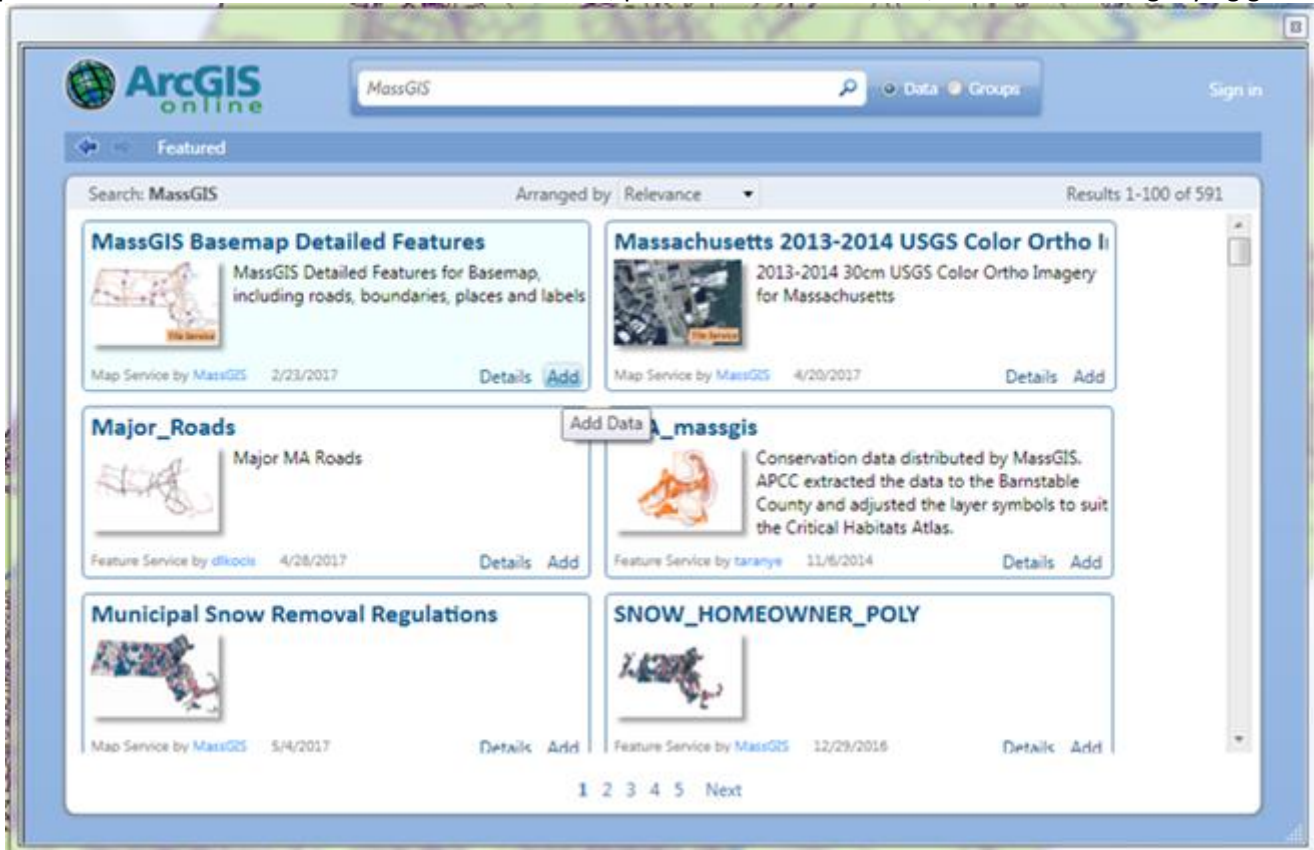
1. Open a map project in ArcMap (an MXD file)
2. Click the Add Data button, then use the drop-down arrow to highlight "Add Data From ArcGIS Online."



This opens a search dialog. (Note: No need to sign in)



3. Type “MassGIS” in the Search window to look for free, public data from MassGIS, then click the magnifying glass.



4. Highlight “MassGIS Basemap Detailed Features” and click Add.

The data layers in this case are compiled together with symbols and scale settings already. The base map will appear in your map as a single layer. In this case you can't turn individual layers on or off, nor change the scale settings that determine the zoom levels at which a feature becomes visible. The purpose here is convenience rather than fine-grained control.

You'll usually want to move the base maps you add this way to the bottom of your Table of Contents in ArcMap, and then adjust local layers over that for polygon fills or transparency.

More to Explore: You'll notice many other data layers in the results for MassGIS. Among the most useful are the **Aerial Image** base maps for various years. Add the work “ortho” to the search to find them, then click Add to include them in your MXD. Of course, MassGIS is just one source among thousands, but don't wander off too far!

– Russ Gaulin, Town of Concord GIS Application Integration Program Manager

[Back to Top](#)