



Junction Park Subcommittee Update

March 17, 2022

Agenda

- Recap February 16th Public Forum
 - Review next steps for meeting June due date
 - Discuss short term proposal and when to submit to Town
 - Discuss long term proposals
- 
- A decorative green curved shape is located in the bottom right corner of the slide, extending from the right edge towards the center.

February 16th Virtual Public Forum Recap

- Survey prior to Forum: >500 responses!
 - 53 attendees; 4 BFRT committee members present
 - Received similar feedback as received in survey
 - New perspectives shared as well
- 
- A decorative green curved shape is located in the bottom right corner of the slide, starting from the bottom edge and curving upwards and to the left.

Suggested Next Steps for JP Conceptualization

- **Today's Meeting:** Review concepts and determine which to proceed with
- **April 5th (?) Subcommittee:** Ask for Town Staff's thoughts on feasibility of our concepts
- **April 7th BFRT:** Share meeting findings with BFRTAC
- **Week of April 25th:** Public Forum in the Park (concepts on display as posters)
- **May 5th BFRT Meeting:** Share proposal draft, ask for feedback
- **June 2nd BFRT Meeting:** Approve final proposal, send to Town

Short Term Concept

- Stay high level
- Determine whether or not we are ready to submit a Short Term Proposal to the Town



Short Term (JP1)

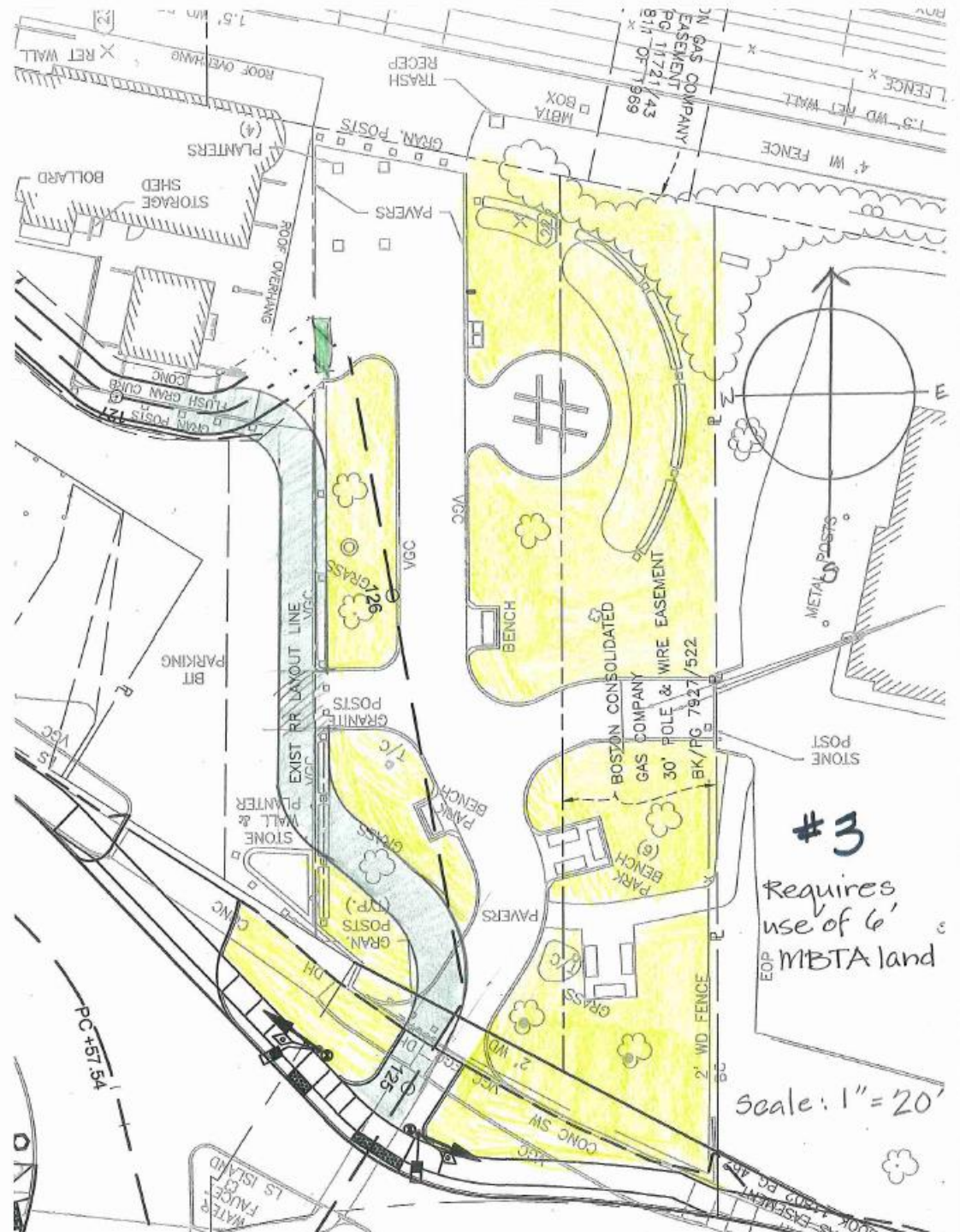
- Keeps current footprint of path and park
- Separates rail trail from non-rail trail users
 Left/Western Side: Rail Trail (8' / 4' per lane)
 Right/Eastern Side: Non-Rail Trail (4')
- Barrier to visually and physically discourage rail trail users from crossing tracks

Thoughts?

DECISION: Do we want to send this to the Town now?

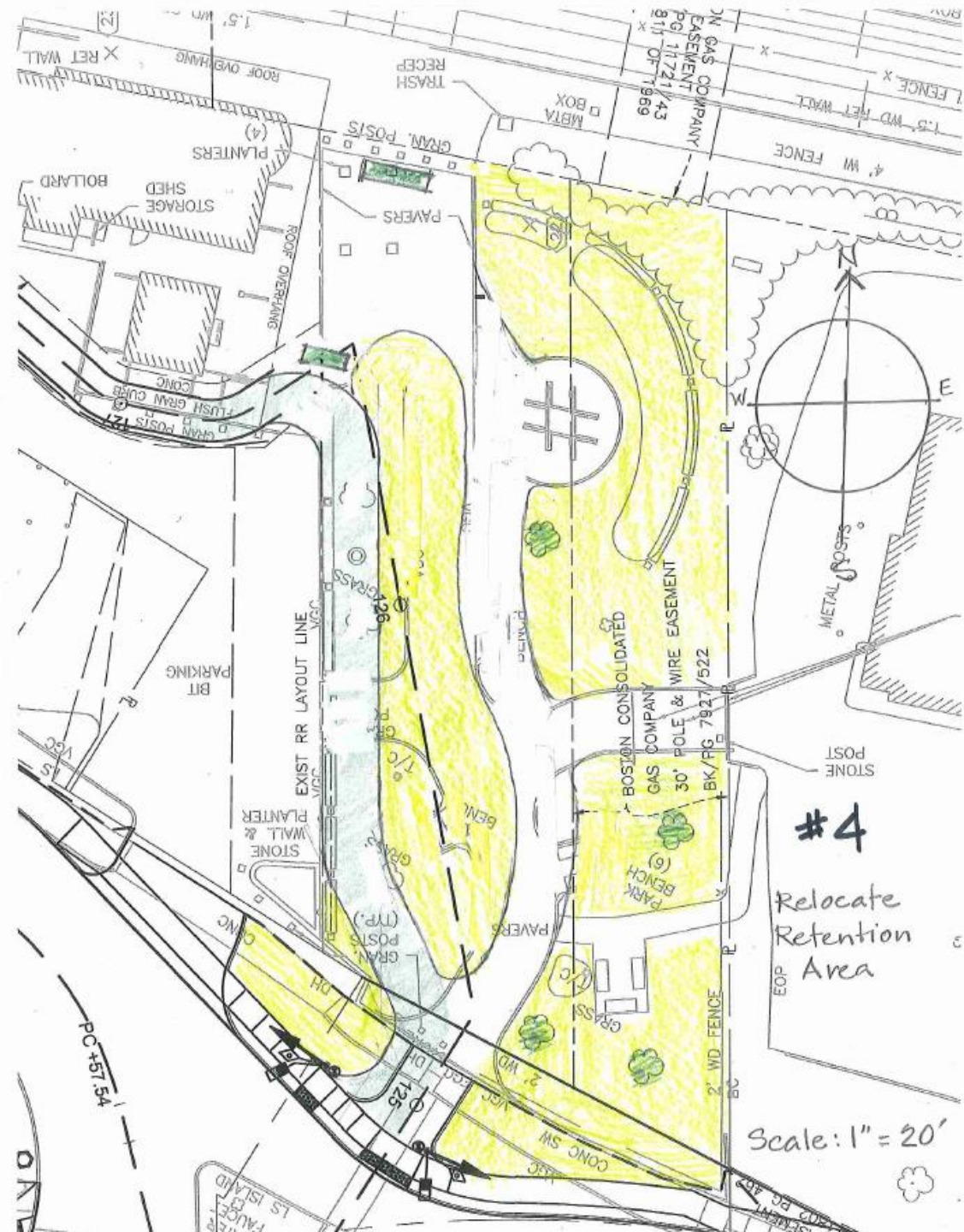
Long Term Concepts - THINK HIGH LEVEL

- First pass only
- Focus today is on **the flow of the pathways** (separating rail trail from non-rail trail)
- **We are NOT discussing today:**
 - Signage
 - Seating areas
 - Markings
 - Landscaping
 - Retention basins
 - Parking
 - Lights
- Goals for Today's Discussion:
 - Determine high-level PRO's and CON's for each
 - Determine if we want to proceed with all or some of the concepts
- Send any other comments/questions to BFRTAC@concordma.gov



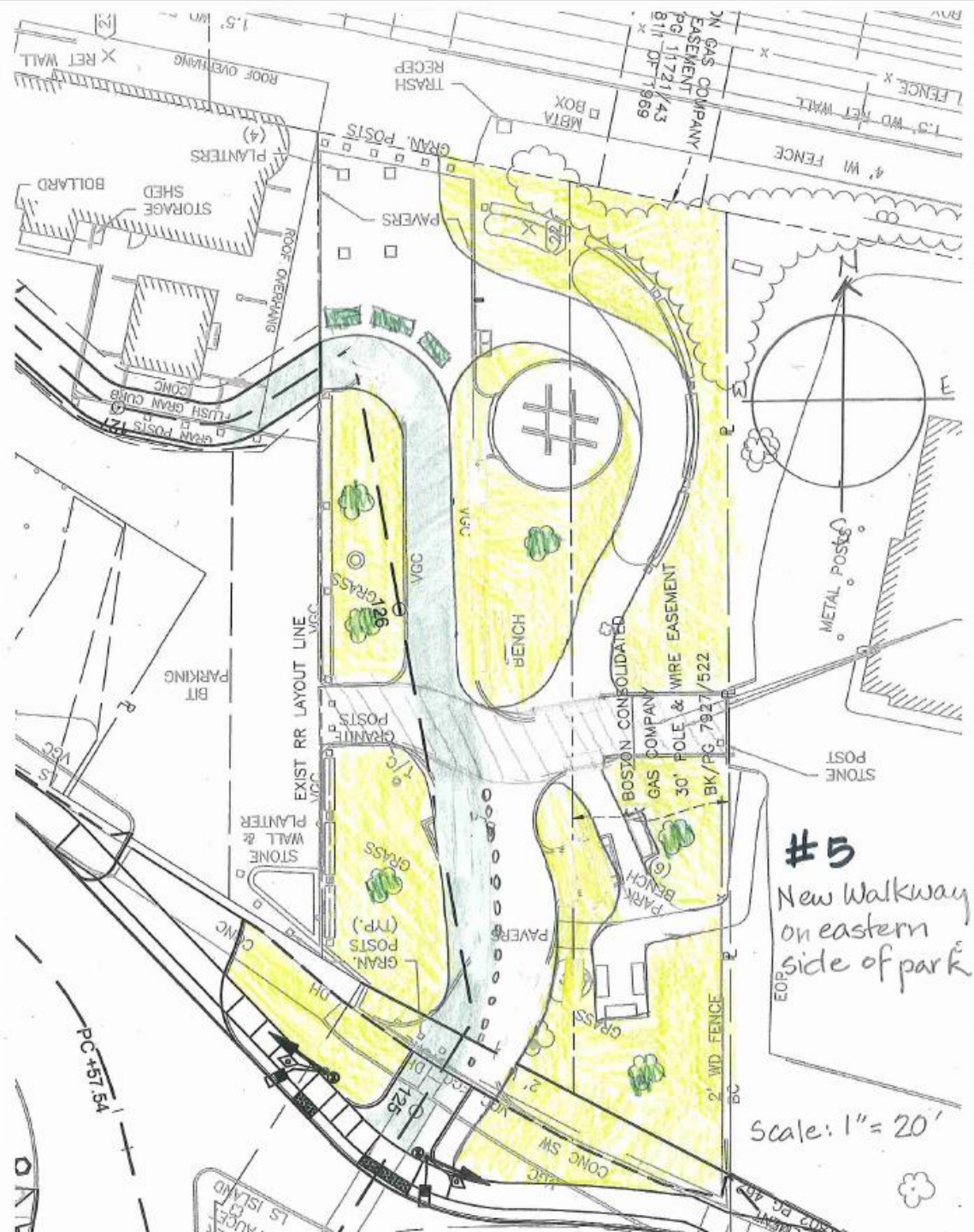
Long Term (JP3) - Requires use of 6' MBTA land

- Separates rail trail from non-rail trail users
 - Left of Existing Retention Area: Rail Trail
 - Existing Path: Non-Rail Trail
- Pros's?
- Con's?



Long Term (JP4) - Relocate retention area


- Separates rail trail from non-rail trail users
Existing Retention Area: Rail Trail
Existing Path: Non-Rail Trail
- Pros's?
- Con's?



Long Term (JP5) - New Walkway on East Side

- Separates rail trail from non-rail trail users
 Left/Western Side: Rail Trail
 Right/Eastern Side: Non-Rail Trail
- Pros's?
- Con's?

Other questions

- Have we forgotten any “big” ideas?
 - What feels like the most challenging aspect of the five long term plans?
 - If you were to throw out one plan, which would it be?
- 
- A large, solid green shape in the bottom right corner of the slide, resembling a quarter-circle or a curved wedge.

Thank you!

