

# Junction Park Proposals and Diagrams

April 7, 2022

# Contents

- ▶ There were seven initial concepts (1 short term & 6 long term) presented for Junction Park at the March 17<sup>th</sup> BFRTAC meeting
- ▶ There was further discussion on the plans during an in-depth discussion of the concepts with Town Engineer, Public Works and Safety Officer, and public at April 5<sup>th</sup> Subcommittee
- ▶ Additional diagrams were suggested at the April 7<sup>th</sup> BFRTAC meeting
- ▶ Diagrams provided by Town of Concord, Division of Planning and Land Management



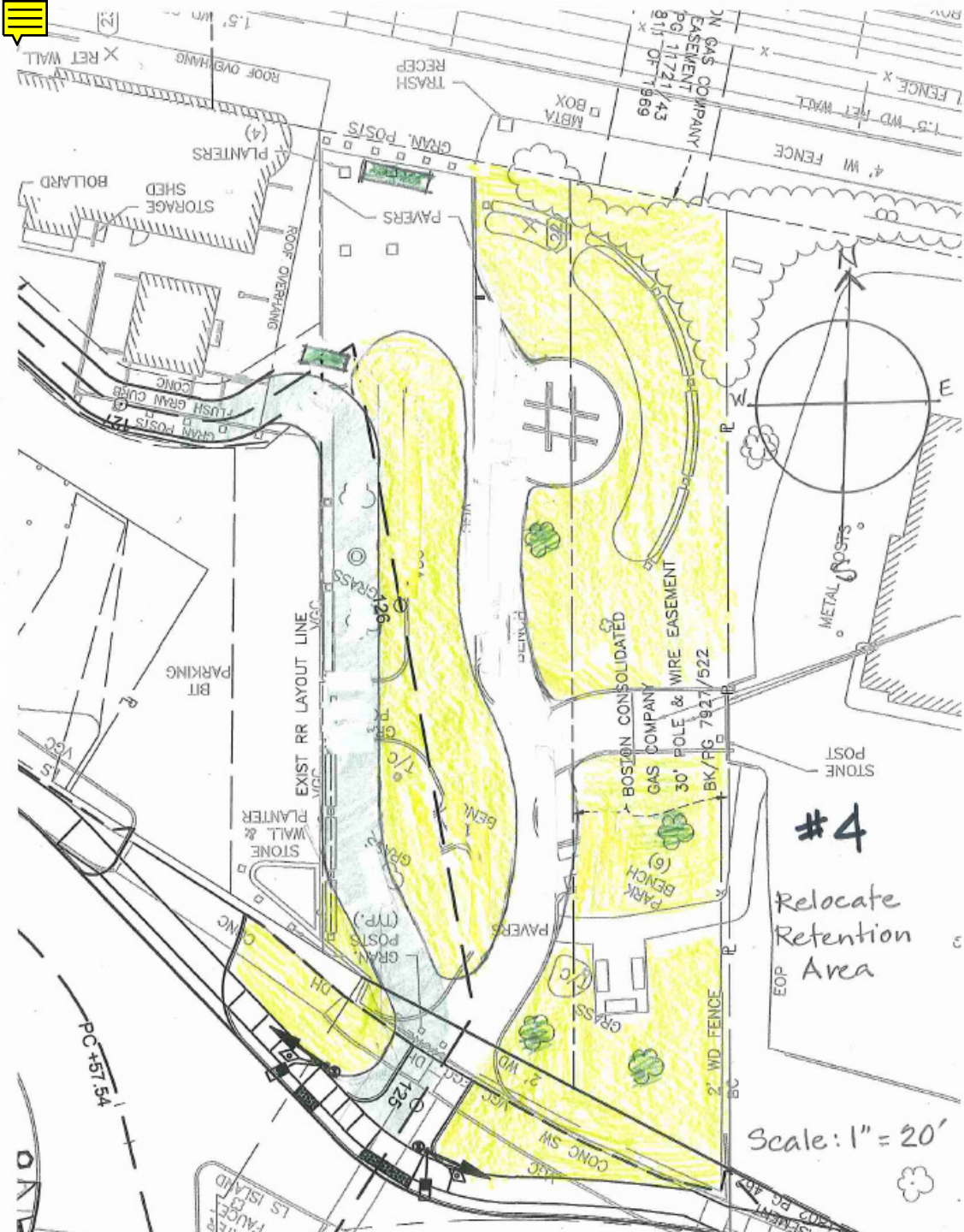


# Short Term (JP#1) Divide current path

- ▶ Retains current footprint of Park
- ▶ Separates rail trail from non-rail trail users with barrier or signifiers (e.g. markings on ground)
  - ▶ Left/Western Side: BFRT path (4 feet wide)
  - ▶ Right/Eastern Side: Park Users (4 feet wide)
- ▶ Planters or other barriers to visually signify and aid trail users in selecting the proper path (and keep them from crossing commuter rail tracks).



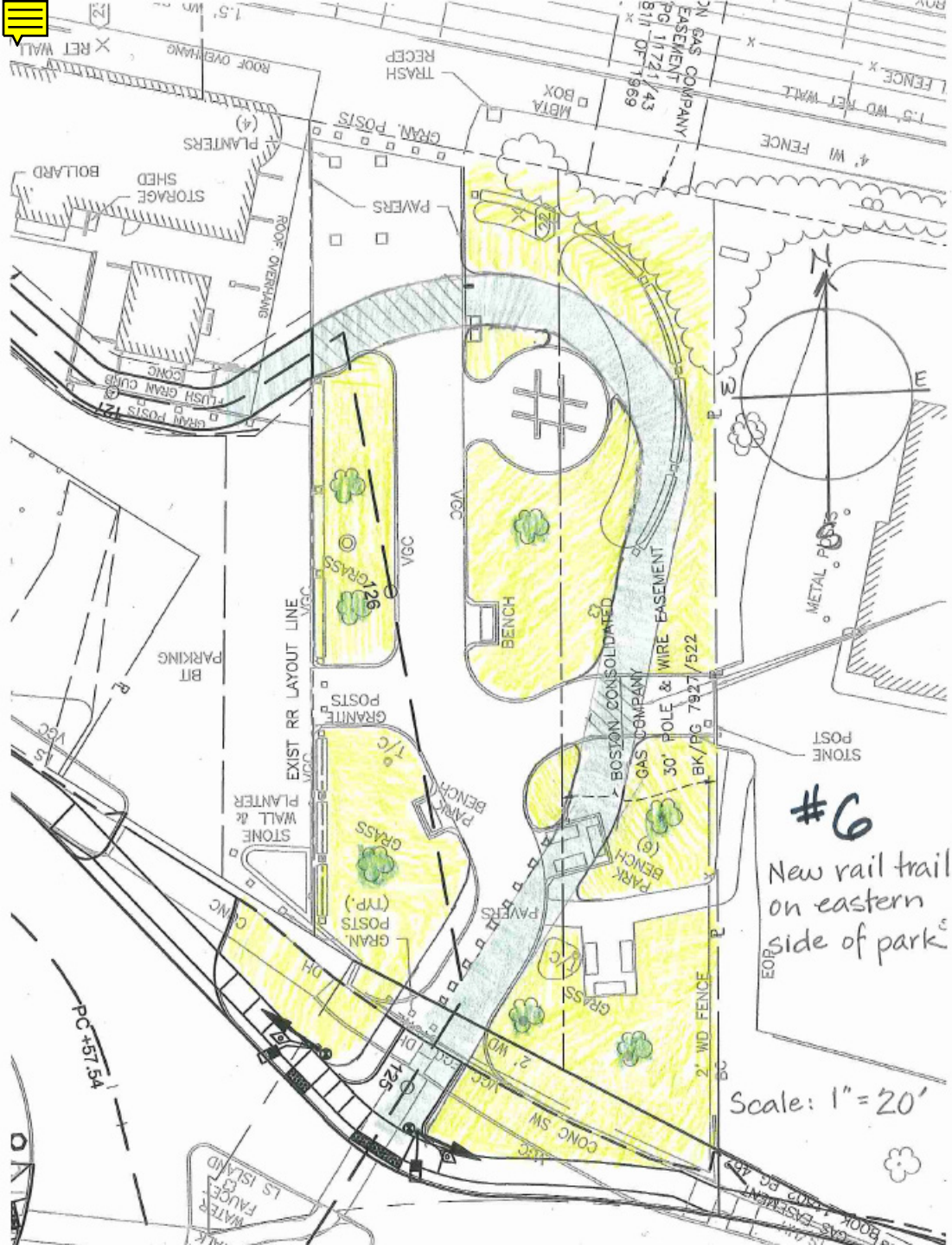




## Long Term (JP #4) - Path placed at western edge of RoW

- ▶ Separates rail trail from non-rail trail users
  - ▶ Path over Existing Retention Area: Continuation of BFRT
  - ▶ Existing Path: For park users
  - ▶ Closes off part of east to west path





## Long Term (JP #6) - New east side path for trail users

- ▶ Shared path with barriers for lower half of Park, then separation occurs with:
  - ▶ Left/Western Side: Park Users
  - ▶ Right/Eastern Side: Trail Users
- ▶ Requires new path construction around “cross-tracks” area in Northeast section of park for trail users
- ▶ Widening of path and installation of barriers in lower half of park
- ▶ Creates multiple Trail/Park user intersections







