

17 Fy25

Appendix I



TOWN OF CONCORD
COMMUNITY PRESERVATION COMMITTEE

141 KEYES ROAD, CONCORD, MA 01742
TEL. (978) 318-3290 FAX (978) 318-3291

SEP - 8 2023

PLANNING & LAND
TOWN OF CONCORD, MA

Application for CPC Funding

Due no later than 12:00 noon on Friday, September 8, 2023

Applicant*: Concord Scout Hosue, Inc
Federal Tax Id. No.*: 042-104-027
Co-Applicant (if applicable): _____

Project Name*: The Concord Scout House Floor Replacement Project

Project Location/Address (if applicable): 74 Walden Street

Purpose*: (Select all that apply)

- Open Space Community Housing Historic Preservation Recreation

Project Budget*:

Amount of CPC Funds Requested: \$ 35,000
Amount from Other Funding Sources: \$ 30,730
Total Project Budget: \$ 65,730
(If multi-year project, note current phase only)

Please check which of the following is included with this Application:

- One Paragraph Project Summary * _____ Architectural plans, site plans, photographs (if appropriate)
 Map (if applicable) _____
 Narrative * Copy of IRS determination letter (Non-profit Organizations only)*
_____ Selection Criteria and Needs Assessment _____
 Detailed Project Budget * Copy of Audit or most recent Financial Information (Non-profit Organizations only)*
_____ Feasibility Assessment _____
_____ Statement of Sustainability (if applicable) Letters of Support (if any)
 Timeline *

Project Contact Person*: Robert Kiihne, President of the Concord Scout House
Project Contact Address*: 74 Walden Street
Project Contact Phone*: 978-884-3190 Email*: robert.kiihne@concordscouthouse.org

Authorized Signature of Applicant*:

Authorized Signature of Property Owner* (if different): _____

* Required

For Historic Preservation Projects Only – please check the box below left and acknowledge:

- I/We have read the U.S. Secretary of the Interior's Standards for the Treatment of Historic Properties and understand that planning for and execution of this project must meet these standards.

The Concord Scout House Floor Replacement Project Application

Concord Scout House Inc is a 501c3 organization that maintains and manages the Concord Scout House as a resource for Scouting and other community activities. We have received CPC funding in 2009 and 2012 for a historic structures report and major structural repairs respectively. These funds were hugely helpful in accomplishing major tasks.

Statement of Need:

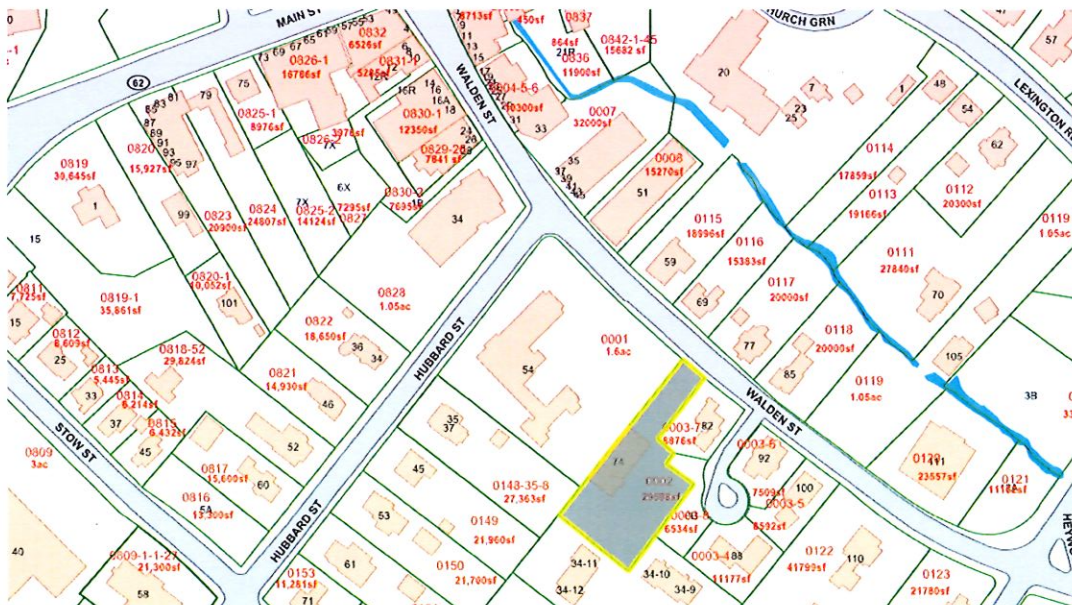
The Concord Scout House hosts Contra Dances every Monday night, Boy Scouts on Tuesday nights, Cub Scouts and Girl Scouts at least once a week as well as weddings, waltzes, memorials and bar mitzvahs. The Scout House is busy about 320 days a year. Unfortunately the Scout House hall floor is now failing. The floor has hit a critical point and is sprintering in many locations, endangering all Scout House users. The floor must be replaced as soon as possible so that we may host the community as we have done for the last 90 years.

Summary of the Project:

The floor replacement project is a **historic preservation** project that will allow the Concord Scout House to continue to be the place we have always been. The **project goals** are: to replace the wooden floor of 2 1/2" maple with an identical floor, to perform the work at a time with the least amount of impact and to maintain the historic look and feel of the Concord Scout House. The **budget** of \$65,730 is based on a contractor estimate from a contractor that the CSH has worked with extensively, contract management and a 5% contingency. The Concord Scout House is asking for \$35,000 from the CPC with the additional \$30,730 coming from the CSH.

MAP

Concord Scout House location (Map GIS) in the historic district



Narrative:

In 1930, the conversion of a barn on this site created the Concord Girl Scout House, CGSH, now known as The Concord Scout House, CSH, since the inclusion of the Boy and Cub Scout community. The floor is a large open expanse. The hall was repurposed for Girl Scouts and general use for members of the community. From its inception until today, the floor of the CSH has felt the footfalls of many of Concord's young adults. Today the hall is recognized as a unique and cherished resource by dancers from far and wide. A well-known dance was created by one of our dance organizers, The Scout House Reel. The floor preserves and strengthens the tradition of welcoming social dancing such as waltzes, squares, contras and family dances. The dance events held in our Hall reflect a vibrant community spirit.

Concord Boy Scouts, Girl Scouts and Cub Scouts all host regular meetings and events at the CSH. In the winter these events are often held shoeless. We can not have splinters coming from the floor and continue to host these community events. The Hall also hosts Boy Scout Eagle ceremonies, Cub Scout Pinewood Derbys and even Girl Scout Overnight "Camp-outs" both local and out of town Scouts.

Over the last 90 years the Hall floor has been sanded and refinished a number of times, to the point where it can no longer be sanded, but only screened, (a process that takes off the top layer of polyurethane but doesn't remove any of the wood) due to the constant use. In 2000 the organization recognized that the floor would fail unless we aggressively maintained its' finish. We thus buff, or screen, and add a layer of a very hard commercial finish every year. This active maintenance plan has bought us many years of heavy use. Unfortunately, this has not been enough to stop the floor from continuing to fail. The top floor board tongues are less than an 1/8" in thickness in most locations and they are not splitting off from the floor creating long splinters and divots in the floor. This unsafe condition is a hazard to all CSH users.

The floor must be replaced so that the Concord Scout House can serve the community for the next 90 years. The new floor will be made of identical materials, installed and finished as was the original floor at the birth of the Concord Scout House.

Timeline:

- May 1st 2024: Contract with flooring company
- 1st week of July 2024: Removal of failing floor
- 2nd-4 week of July 2024 Installation and finishing of floor
- August 2024: The new floor cures before the fall

**Concord Scout House Floor Replacement
Detailed Project Budget**

Contractor estimate lines	Estimated Costs
Remove and dispose of existing maple floor. Re-nail subfloor to floor joist. Price does not include any subfloor repairs.	\$7,850
Supply 2 1/4" X 3/4" 1st grade maple for event hall. Install, sand, scrape and disc floor. Apply three coats of natural oil base satin finish.	\$44,880
Sand, scrape and disc existing stage area floor. Apply three coats of natural oil base satin finish.	\$1,600
SUBTOTAL	\$54,330
Cost of hourly staff to accommodate contractor	\$2,100
Allowance for unanticipated subfloor repairs	\$5,000
Contingency for rise in material and labor costs before project begins of 7%	\$4,300
TOTAL COST:	\$65,730
CPC FUNDING REQUESTED:	\$35,000
Concord Scout House Funds	\$30,730

Supporting Documents:

Contractor's estimate

Form 990 - 2021

Non-profit documentation

Letters of support

GODDARD FLOOR SPECIALISTS, INC.

"Fine Wood Floors Since 1926"

199 North Avenue, Weston, MA 02493

781 890-4559 FAX 781 899-5983

www.goddardfloors.com

Proposal

8/22/2023

Concord Scout House, Inc.
74 Walden Street
ATTN: Jack O'Connor
Concord, MA 01742

Job Site

Phone # c 978 405-4459

E-mail simitopaz@comcast.net

Remove and dispose of existing maple floor. Re-nail subfloor to floor joist. Price does not include any subfloor repairs.	7,850.00
Supply 2 1/4" X 3/4" 1st grade maple for event hall. Install, sand, scrape and disc floor. Apply three coats of natural oil base satin finish.	44,880.00
Sand, scrape and disc existing stage area floor. Apply three coats of natural oil base satin finish.	1,600.00
Total \$54,330.00	

PAYMENT TERMS: 1/3 deposit due when proposal is signed, 1/3 due at start of job and balance due in full upon completion.

A finance charge of 1 1/2% per month (18% per annum) will be applied to unpaid balance after 30 days.

ACCEPTANCE OF PROPOSAL: If acceptable please sign and return copy in enclosed envelope. The above prices, specifications and conditions are satisfactory and are hereby accepted. You are authorized to do the work as specified. Payment will be made as outlined above. Prices subject to change if not accepted within 30 days.

Date of acceptance _____ Signature _____

TERMS and CONDITIONS

All material is guaranteed as specified. All work to be completed in a professional manner according to standard practices. Any alteration or deviation from above specifications involving extra costs will become an extra charge over and above the estimate. All agreements contingent upon strikes, accidents or delays beyond our control. Owner to carry fire, tornado and other necessary insurance. Our workers are fully covered by Workers Compensation Insurance. In the event that your account is turned over to an attorney for collection, you are obligated to pay reasonable attorney's fees in an amount not less than 33 % of the gross amount due. The abovesigned hereby subject themselves to the personal jurisdiction of the Comm of MA. This contract shall be governed by the laws of the Comm of MA and is a binding contract. The abovesigned hereby waives their right to a trial by jury. The abovesigned hereby unconditionally guarantees a debt to Goddard Floors.

Return of Organization Exempt From Income Tax

Under section 501(c), 527, or 4947(a)(1) of the Internal Revenue Code (except private foundations)

2021

Department of the Treasury
Internal Revenue Service

▶ Do not enter social security numbers on this form as it may be made public.
▶ Go to www.irs.gov/Form990 for instructions and the latest information.

Open to Public
Inspection

A For the 2021 calendar year, or tax year beginning 2021, and ending 2020

B Check if applicable: <input type="checkbox"/> Address change <input type="checkbox"/> Name change <input type="checkbox"/> Initial return <input type="checkbox"/> Final return/terminated <input type="checkbox"/> Amended return <input type="checkbox"/> Application pending	C CONCORD SCOUT HOUSE, INC. P.O. BOX 73 CONCORD, MA 01742-0073	D Employer identification number 04-2104027	E Telephone number 978-369-3455
F Name and address of principal officer: Robert Kihne Same As C Above		G Gross receipts \$ 102,967.	
I Tax-exempt status: <input checked="" type="checkbox"/> 501(c)(3) <input type="checkbox"/> 501(c) () (insert no.) <input type="checkbox"/> 4947(a)(1) or <input type="checkbox"/> 527		H(a) Is this a group return for subordinates? <input type="checkbox"/> Yes <input checked="" type="checkbox"/> No H(b) Are all subordinates included? <input type="checkbox"/> Yes <input type="checkbox"/> No If "No," attach a list. See instructions.	
J Website: www.concordscouthouse.org		H(c) Group exemption number ▶	
K Form of organization: <input checked="" type="checkbox"/> Corporation <input type="checkbox"/> Trust <input type="checkbox"/> Association <input type="checkbox"/> Other ▶		L Year of formation: 1930	M State of legal domicile: MA

Part I Summary

1	Briefly describe the organization's mission or most significant activities: <u>To foster and to assist the Scout Movement, to provide a facility for wholesome recreational activities for youth and adults in the community, and to maintain and care for such facility.</u>		
2	Check this box <input type="checkbox"/> if the organization discontinued its operations or disposed of more than 25% of its net assets.		
3	Number of voting members of the governing body (Part VI, line 1a).....	3	11
4	Number of independent voting members of the governing body (Part VI, line 1b).....	4	11
5	Total number of individuals employed in calendar year 2021 (Part V, line 2a).....	5	2
6	Total number of volunteers (estimate if necessary).....	6	0
7a	Total unrelated business revenue from Part VIII, column (C), line 12.....	7a	0.
7b	Net unrelated business taxable income from Form 990-T, Part I, line 11.....	7b	0.
8	Contributions and grants (Part VIII, line 1h).....	Prior Year	Current Year
9	Program service revenue (Part VIII, line 2g).....	43,461.	73,664.
10	Investment income (Part VIII, column (A), lines 3, 4, and 7d).....	25,525.	28,902.
11	Other revenue (Part VIII, column (A), lines 5, 6d, 8c, 9c, 10c, and 11e).....	1,152.	401.
12	Total revenue – add lines 8 through 11 (must equal Part VIII, column (A), line 12).....	70,138.	102,967.
13	Grants and similar amounts paid (Part IX, column (A), lines 1-3).....		
14	Benefits paid to or for members (Part IX, column (A), line 4).....		
15	Salaries, other compensation, employee benefits (Part IX, column (A), lines 5-10).....	26,750.	27,501.
16a	Professional fundraising fees (Part IX, column (A), line 11e).....		
b	Total fundraising expenses (Part IX, column (D), line 25) ▶ 1,291.		
17	Other expenses (Part IX, column (A), lines 11a-11d, 11f-24e).....	73,875.	66,365.
18	Total expenses. Add lines 13-17 (must equal Part IX, column (A), line 25).....	100,625.	93,866.
19	Revenue less expenses. Subtract line 18 from line 12.....	-30,487.	9,101.
20	Total assets (Part X, line 16).....	Beginning of Current Year	End of Year
21	Total liabilities (Part X, line 26).....	586,972.	588,684.
22	Net assets or fund balances. Subtract line 21 from line 20.....	15,046.	7,657.
		571,926.	581,027.

Part II Signature Block

Under penalties of perjury, I declare that I have examined this return, including accompanying schedules and statements, and to the best of my knowledge and belief, it is true, correct, and complete. Declaration of preparer (other than officer) is based on all information of which preparer has any knowledge.

Sign Here	Signature of officer <u>Charles Poutasse</u>	Date _____
	Type or print name and title Treasurer	

Paid Preparer Use Only	Print/Type preparer's name _____	Preparer's signature Self-Prepared	Date _____	Check <input checked="" type="checkbox"/> if self-employed	PTIN _____
	Firm's name ▶ _____	Firm's EIN ▶ _____		Phone no. _____	

May the IRS discuss this return with the preparer shown above? See instructions. Yes No

Part III Statement of Program Service Accomplishments

Check if Schedule O contains a response or note to any line in this Part III. []

1 Briefly describe the organization's mission:

To foster and to assist the Scout Movement, to provide a facility for wholesome recreational activities for youth and adults in the community, and to maintain and care for such facility.

2 Did the organization undertake any significant program services during the year which were not listed on the prior Form 990 or 990-EZ? [] Yes [X] No

3 Did the organization cease conducting, or make significant changes in how it conducts, any program services? [] Yes [X] No

4 Describe the organization's program service accomplishments for each of its three largest program services, as measured by expenses. Section 501(c)(3) and 501(c)(4) organizations are required to report the amount of grants and allocations to others, the total expenses, and revenue, if any, for each program service reported.

4a (Code:) (Expenses \$ 89,412. including grants of \$) (Revenue \$ 28,902.)

During 2021, many of the activities which use the Organization's building were suspended due to the Covid-19 pandemic. These include meetings of Girl Scout, Boy Scout, Brownie and Cub Scout groups, dances sponsored by various dance groups, and family celebrations. The non-profit cooperative day care center with 25 children continued to operate for the entire year, with safety protocols in place. The Organization successfully applied for and received forgiven Paycheck Protection Program loans and Employee Retention Credits and reduced payroll and other operating expenses. This enabled the Organization to continue operations despite the reduction of user fees from its normal activities.

4b (Code:) (Expenses \$ including grants of \$) (Revenue \$)

4c (Code:) (Expenses \$ including grants of \$) (Revenue \$)

4d Other program services (Describe on Schedule O.) (Expenses \$ including grants of \$) (Revenue \$)

4e Total program service expenses ▶ 89,412.

Part IV Checklist of Required Schedules

	Yes	No
1 Is the organization described in section 501(c)(3) or 4947(a)(1) (other than a private foundation)? If 'Yes,' complete Schedule A.....	X	
2 Is the organization required to complete Schedule B, Schedule of Contributors? See instructions.....	X	
3 Did the organization engage in direct or indirect political campaign activities on behalf of or in opposition to candidates for public office? If 'Yes,' complete Schedule C, Part I.....		X
4 Section 501(c)(3) organizations. Did the organization engage in lobbying activities, or have a section 501(h) election in effect during the tax year? If 'Yes,' complete Schedule C, Part II.....		X
5 Is the organization a section 501(c)(4), 501(c)(5), or 501(c)(6) organization that receives membership dues, assessments, or similar amounts as defined in Revenue Procedure 98-19? If 'Yes,' complete Schedule C, Part III.....		X
6 Did the organization maintain any donor advised funds or any similar funds or accounts for which donors have the right to provide advice on the distribution or investment of amounts in such funds or accounts? If 'Yes,' complete Schedule D, Part I.....		X
7 Did the organization receive or hold a conservation easement, including easements to preserve open space, the environment, historic land areas, or historic structures? If 'Yes,' complete Schedule D, Part II.....		X
8 Did the organization maintain collections of works of art, historical treasures, or other similar assets? If 'Yes,' complete Schedule D, Part III.....		X
9 Did the organization report an amount in Part X, line 21, for escrow or custodial account liability, serve as a custodian for amounts not listed in Part X; or provide credit counseling, debt management, credit repair, or debt negotiation services? If 'Yes,' complete Schedule D, Part IV.....		X
10 Did the organization, directly or through a related organization, hold assets in donor-restricted endowments or in quasi endowments? If 'Yes,' complete Schedule D, Part V.....	X	
11 If the organization's answer to any of the following questions is 'Yes', then complete Schedule D, Parts VI, VII, VIII, IX, or X, as applicable.		
a Did the organization report an amount for land, buildings, and equipment in Part X, line 10? If 'Yes,' complete Schedule D, Part VI.....	X	
b Did the organization report an amount for investments - other securities in Part X, line 12, that is 5% or more of its total assets reported in Part X, line 16? If 'Yes,' complete Schedule D, Part VII.....		X
c Did the organization report an amount for investments - program related in Part X, line 13, that is 5% or more of its total assets reported in Part X, line 16? If 'Yes,' complete Schedule D, Part VIII.....		X
d Did the organization report an amount for other assets in Part X, line 15, that is 5% or more of its total assets reported in Part X, line 16? If 'Yes,' complete Schedule D, Part IX.....		X
e Did the organization report an amount for other liabilities in Part X, line 25? If 'Yes,' complete Schedule D, Part X.....		X
f Did the organization's separate or consolidated financial statements for the tax year include a footnote that addresses the organization's liability for uncertain tax positions under FIN 48 (ASC 740)? If 'Yes,' complete Schedule D, Part X.....	X	
12a Did the organization obtain separate, independent audited financial statements for the tax year? If 'Yes,' complete Schedule D, Parts XI and XII.....		X
b Was the organization included in consolidated, independent audited financial statements for the tax year? If 'Yes,' and if the organization answered 'No' to line 12a, then completing Schedule D, Parts XI and XII is optional.....		X
13 Is the organization a school described in section 170(b)(1)(A)(ii)? If 'Yes,' complete Schedule E.....		X
14a Did the organization maintain an office, employees, or agents outside of the United States?.....		X
b Did the organization have aggregate revenues or expenses of more than \$10,000 from grantmaking, fundraising, business, investment, and program service activities outside the United States, or aggregate foreign investments valued at \$100,000 or more? If 'Yes,' complete Schedule F, Parts I and IV.....		X
15 Did the organization report on Part IX, column (A), line 3, more than \$5,000 of grants or other assistance to or for any foreign organization? If 'Yes,' complete Schedule F, Parts II and IV.....		X
16 Did the organization report on Part IX, column (A), line 3, more than \$5,000 of aggregate grants or other assistance to or for foreign individuals? If 'Yes,' complete Schedule F, Parts III and IV.....		X
17 Did the organization report a total of more than \$15,000 of expenses for professional fundraising services on Part IX, column (A), lines 6 and 11e? If 'Yes,' complete Schedule G, Part I. See instructions.....		X
18 Did the organization report more than \$15,000 total of fundraising event gross income and contributions on Part VIII, lines 1c and 8a? If 'Yes,' complete Schedule G, Part II.....		X
19 Did the organization report more than \$15,000 of gross income from gaming activities on Part VIII, line 9a? If 'Yes,' complete Schedule G, Part III.....		X
20a Did the organization operate one or more hospital facilities? If 'Yes,' complete Schedule H.....		X
b If 'Yes' to line 20a, did the organization attach a copy of its audited financial statements to this return?.....		
21 Did the organization report more than \$5,000 of grants or other assistance to any domestic organization or domestic government on Part IX, column (A), line 1? If 'Yes,' complete Schedule I, Parts I and II.....		X

Part IV Checklist of Required Schedules (continued)

	Yes	No
22 Did the organization report more than \$5,000 of grants or other assistance to or for domestic individuals on Part IX, column (A), line 2? If 'Yes,' complete Schedule I, Parts I and III.		X
23 Did the organization answer 'Yes' to Part VII, Section A, line 3, 4, or 5, about compensation of the organization's current and former officers, directors, trustees, key employees, and highest compensated employees? If 'Yes,' complete Schedule J.		X
24a Did the organization have a tax-exempt bond issue with an outstanding principal amount of more than \$100,000 as of the last day of the year, that was issued after December 31, 2002? If 'Yes,' answer lines 24b through 24d and complete Schedule K. If 'No,' go to line 25a.		X
b Did the organization invest any proceeds of tax-exempt bonds beyond a temporary period exception?		
c Did the organization maintain an escrow account other than a refunding escrow at any time during the year to defease any tax-exempt bonds?		
d Did the organization act as an 'on behalf of' issuer for bonds outstanding at any time during the year?		
25a Section 501(c)(3), 501(c)(4), and 501(c)(29) organizations. Did the organization engage in an excess benefit transaction with a disqualified person during the year? If 'Yes,' complete Schedule L, Part I.		X
b Is the organization aware that it engaged in an excess benefit transaction with a disqualified person in a prior year, and that the transaction has not been reported on any of the organization's prior Forms 990 or 990-EZ? If 'Yes,' complete Schedule L, Part I.		X
26 Did the organization report any amount on Part X, line 5 or 22, for receivables from or payables to any current or former officer, director, trustee, key employee, creator or founder, substantial contributor, or 35% controlled entity or family member of any of these persons? If 'Yes,' complete Schedule L, Part II.		X
27 Did the organization provide a grant or other assistance to any current or former officer, director, trustee, key employee, creator or founder, substantial contributor or employee thereof, a grant selection committee member, or to a 35% controlled entity (including an employee thereof) or family member of any of these persons? If 'Yes,' complete Schedule L, Part III.		X
28 Was the organization a party to a business transaction with one of the following parties (see the Schedule L, Part IV, instructions for applicable filing thresholds, conditions, and exceptions):		
a A current or former officer, director, trustee, key employee, creator or founder, or substantial contributor? If 'Yes,' complete Schedule L, Part IV.		X
b A family member of any individual described in line 28a? If 'Yes,' complete Schedule L, Part IV.		X
c A 35% controlled entity of one or more individuals and/or organizations described in line 28a or 28b? If 'Yes,' complete Schedule L, Part IV.		X
29 Did the organization receive more than \$25,000 in non-cash contributions? If 'Yes,' complete Schedule M.		X
30 Did the organization receive contributions of art, historical treasures, or other similar assets, or qualified conservation contributions? If 'Yes,' complete Schedule M.		X
31 Did the organization liquidate, terminate, or dissolve and cease operations? If 'Yes,' complete Schedule N, Part I.		X
32 Did the organization sell, exchange, dispose of, or transfer more than 25% of its net assets? If 'Yes,' complete Schedule N, Part II.		X
33 Did the organization own 100% of an entity disregarded as separate from the organization under Regulations sections 301.7701-2 and 301.7701-3? If 'Yes,' complete Schedule R, Part I.		X
34 Was the organization related to any tax-exempt or taxable entity? If 'Yes,' complete Schedule R, Part II, III, or IV, and Part V, line 1.		X
35a Did the organization have a controlled entity within the meaning of section 512(b)(13)?		X
b If 'Yes' to line 35a, did the organization receive any payment from or engage in any transaction with a controlled entity within the meaning of section 512(b)(13)? If 'Yes,' complete Schedule R, Part V, line 2.		
36 Section 501(c)(3) organizations. Did the organization make any transfers to an exempt non-charitable related organization? If 'Yes,' complete Schedule R, Part V, line 2.		X
37 Did the organization conduct more than 5% of its activities through an entity that is not a related organization and that is treated as a partnership for federal income tax purposes? If 'Yes,' complete Schedule R, Part VI.		X
38 Did the organization complete Schedule O and provide explanations on Schedule O for Part VI, lines 11b and 19? Note: All Form 990 filers are required to complete Schedule O.	X	

Part V Statements Regarding Other IRS Filings and Tax Compliance

Check if Schedule O contains a response or note to any line in this Part V.

	Yes	No
1 a Enter the number reported in box 3 of Form 1096. Enter -0- if not applicable.		
b Enter the number of Forms W-2G included on line 1a. Enter -0- if not applicable.		
c Did the organization comply with backup withholding rules for reportable payments to vendors and reportable gaming (gambling) winnings to prize winners?	X	

Part V Statements Regarding Other IRS Filings and Tax Compliance (continued)

		Yes	No
2 a	Enter the number of employees reported on Form W-3, Transmittal of Wage and Tax Statements, filed for the calendar year ending with or within the year covered by this return.		
	2 a		2
	b	X	
3 a	Did the organization have unrelated business gross income of \$1,000 or more during the year?		X
	3 a		X
	3 b		
4 a	At any time during the calendar year, did the organization have an interest in, or a signature or other authority over, a financial account in a foreign country (such as a bank account, securities account, or other financial account)?		X
	4 a		X
	b		
5 a	Was the organization a party to a prohibited tax shelter transaction at any time during the tax year?		X
	5 a		X
	5 b		X
	5 c		
6 a	Does the organization have annual gross receipts that are normally greater than \$100,000, and did the organization solicit any contributions that were not tax deductible as charitable contributions?		X
	6 a		X
	6 b		
7	Organizations that may receive deductible contributions under section 170(c).		
	a		X
	7 a		X
	7 b		
	c		X
	7 c		X
	d		
	7 d		
	e		X
	7 e		X
	f		X
	7 f		X
	g		
	7 g		
	h		
	7 h		
8	Sponsoring organizations maintaining donor advised funds. Did a donor advised fund maintained by the sponsoring organization have excess business holdings at any time during the year?		
	8		
9	Sponsoring organizations maintaining donor advised funds.		
	a		
	9 a		
	b		
	9 b		
10	Section 501(c)(7) organizations. Enter:		
	a		
	10 a		
	b		
	10 b		
11	Section 501(c)(12) organizations. Enter:		
	a		
	11 a		
	b		
	11 b		
12 a	Section 4947(a)(1) non-exempt charitable trusts. Is the organization filing Form 990 in lieu of Form 1041?		
	12 a		
	b		
	12 b		
13	Section 501(c)(29) qualified nonprofit health insurance issuers.		
	a		
	13 a		
	b		
	13 b		
	c		
	13 c		
14 a	Did the organization receive any payments for indoor tanning services during the tax year?		X
	14 a		X
	b		
	14 b		
15	Is the organization subject to the section 4960 tax on payment(s) of more than \$1,000,000 in remuneration or excess parachute payment(s) during the year?		X
	15		X
16	Is the organization an educational institution subject to the section 4968 excise tax on net investment income?		X
	16		X
17	Section 501(c)(21) organizations. Did the trust, any disqualified person, or mine operator engage in any activities that would result in the imposition of an excise tax under section 4951, 4952, or 4953?		
	17		

Part VI Governance, Management, and Disclosure. For each 'Yes' response to lines 2 through 7b below, and for a 'No' response to line 8a, 8b, or 10b below, describe the circumstances, processes, or changes on Schedule O. See instructions.
 Check if Schedule O contains a response or note to any line in this Part VI.

Section A. Governing Body and Management

		Yes	No
1 a	Enter the number of voting members of the governing body at the end of the tax year		
	If there are material differences in voting rights among members of the governing body, or if the governing body delegated broad authority to an executive committee or similar committee, explain on Schedule O.		
1 b	Enter the number of voting members included on line 1a, above, who are independent		
2	Did any officer, director, trustee, or key employee have a family relationship or a business relationship with any other officer, director, trustee, or key employee?		X
3	Did the organization delegate control over management duties customarily performed by or under the direct supervision of officers, directors, trustees, or key employees to a management company or other person?		X
4	Did the organization make any significant changes to its governing documents since the prior Form 990 was filed?		X
5	Did the organization become aware during the year of a significant diversion of the organization's assets?		X
6	Did the organization have members or stockholders? See Schedule O	X	
7 a	Did the organization have members, stockholders, or other persons who had the power to elect or appoint one or more members of the governing body? . . See Schedule O	X	
7 b	Are any governance decisions of the organization reserved to (or subject to approval by) members, stockholders, or persons other than the governing body?		X
8	Did the organization contemporaneously document the meetings held or written actions undertaken during the year by the following:		
8 a	The governing body?	X	
8 b	Each committee with authority to act on behalf of the governing body?		X
9	Is there any officer, director, trustee, or key employee listed in Part VII, Section A, who cannot be reached at the organization's mailing address? If 'Yes,' provide the names and addresses on Schedule O		X

Section B. Policies (This Section B requests information about policies not required by the Internal Revenue Code.)

		Yes	No
10 a	Did the organization have local chapters, branches, or affiliates?		X
10 b	If 'Yes,' did the organization have written policies and procedures governing the activities of such chapters, affiliates, and branches to ensure their operations are consistent with the organization's exempt purposes?		
11 a	Has the organization provided a complete copy of this Form 990 to all members of its governing body before filing the form?	X	
12 a	Describe on Schedule O the process, if any, used by the organization to review this Form 990. See Schedule O		X
12 b	Did the organization have a written conflict of interest policy? If 'No,' go to line 13.		
12 c	Were officers, directors, or trustees, and key employees required to disclose annually interests that could give rise to conflicts?		
12 c	Did the organization regularly and consistently monitor and enforce compliance with the policy? If 'Yes,' describe on Schedule O how this was done.		
13	Did the organization have a written whistleblower policy?		X
14	Did the organization have a written document retention and destruction policy?	X	
15	Did the process for determining compensation of the following persons include a review and approval by independent persons, comparability data, and contemporaneous substantiation of the deliberation and decision?		
15 a	The organization's CEO, Executive Director, or top management official.		X
15 b	Other officers or key employees of the organization.		X
	If 'Yes' to line 15a or 15b, describe the process on Schedule O. See instructions.		
16 a	Did the organization invest in, contribute assets to, or participate in a joint venture or similar arrangement with a taxable entity during the year?		X
16 b	If 'Yes,' did the organization follow a written policy or procedure requiring the organization to evaluate its participation in joint venture arrangements under applicable federal tax law, and take steps to safeguard the organization's exempt status with respect to such arrangements?		

Section C. Disclosure

- 17 List the states with which a copy of this Form 990 is required to be filed ▶ MA
- 18 Section 6104 requires an organization to make its Forms 1023 (1024 or 1024-A, if applicable), 990, and 990-T (Section 501(c)(3)s only) available for public inspection. Indicate how you made these available. Check all that apply.
 Own website Another's website Upon request Other (explain on Schedule O)
- 19 Describe on Schedule O whether (and if so, how) the organization made its governing documents, conflict of interest policy, and financial statements available to the public during the tax year. See Schedule O
- 20 State the name, address, and telephone number of the person who possesses the organization's books and records ▶
 CHARLES POUTASSE 82 FITCHBURG TURNPIKE CONCORD MA 01742 978-369-3455

Part VII Compensation of Officers, Directors, Trustees, Key Employees, Highest Compensated Employees, and Independent Contractors

Check if Schedule O contains a response or note to any line in this Part VII.

Section A. Officers, Directors, Trustees, Key Employees, and Highest Compensated Employees

1 a Complete this table for all persons required to be listed. Report compensation for the calendar year ending with or within the organization's tax year.

- List all of the organization's **current** officers, directors, trustees (whether individuals or organizations), regardless of amount of compensation. Enter -0- in columns (D), (E), and (F) if no compensation was paid.
- List all of the organization's **current** key employees, if any. See the instructions for definition of 'key employee.'
- List the organization's five **current** highest compensated employees (other than an officer, director, trustee, or key employee) who received reportable compensation (box 5 of Form W-2, Form 1099-MISC, and/or box 1 of Form 1099-NEC) of more than \$100,000 from the organization and any related organizations.
- List all of the organization's **former** officers, key employees, and highest compensated employees who received more than \$100,000 of reportable compensation from the organization and any related organizations.
- List all of the organization's **former directors or trustees** that received, in the capacity as a former director or trustee of the organization, more than \$10,000 of reportable compensation from the organization and any related organizations.

See the instructions for the order in which to list the persons above.

Check this box if neither the organization nor any related organization compensated any current officer, director, or trustee.

(A) Name and title	(B) Average hours per week (list any hours for related organizations below dotted line)	(C) Position (do not check more than one box, unless person is both an officer and a director/trustee)					(D) Reportable compensation from the organization (W-2/1099-MISC/1099-NEC)	(E) Reportable compensation from related organizations (W-2/1099-MISC/1099-NEC)	(F) Estimated amount of other compensation from the organization and related organizations
		Individual trustee or director	Institutional trustee	Officer	Key employee	Highest compensated employee			
(1) Robert Kiihne President	12 0	X	X				0.	0.	0.
(2) Donald Veino II Vice President	6 0	X	X				0.	0.	0.
(3) Charles Poutasse Treasurer	6 0	X	X				0.	0.	0.
(4) Robin Humes Secretary	6 0	X	X				0.	0.	0.
(5) Allan Chertok Director	6 0	X					0.	0.	0.
(6) John Dow Director	4 0	X					0.	0.	0.
(7) Hannah Fingerle Director	4 0	X					0.	0.	0.
(8) Kristine Millet Director	4 0	X					0.	0.	0.
(9) Jack O'Connor Director	6 0	X					0.	0.	0.
(10) David Owen Director	4 0	X					0.	0.	0.
(11) Julie Whiteneck Director	4 0	X					0.	0.	0.
(12)									
(13)									
(14)									

Part VII Section A. Officers, Directors, Trustees, Key Employees, and Highest Compensated Employees (continued)

(A) Name and title	(B) Average hours per week (list any hours for related organizations below dotted line)	(C) Position (do not check more than one box, unless person is both an officer and a director/trustee)					(D) Reportable compensation from the organization (W-2/1099-MISC/1099-NEC)	(E) Reportable compensation from related organizations (W-2/1099-MISC/1099-NEC)	(F) Estimated amount of other compensation from the organization and related organizations
		Individual trustee or director	Institutional trustee	Officer	Key employee	Highest compensated employee			
(15) -----									
(16) -----									
(17) -----									
(18) -----									
(19) -----									
(20) -----									
(21) -----									
(22) -----									
(23) -----									
(24) -----									
(25) -----									
1 b Subtotal							0.	0.	0.
c Total from continuation sheets to Part VII, Section A							0.	0.	0.
d Total (add lines 1b and 1c)							0.	0.	0.

2 Total number of individuals (including but not limited to those listed above) who received more than \$100,000 of reportable compensation from the organization ▶ 0

	Yes	No
3 Did the organization list any former officer, director, trustee, key employee, or highest compensated employee on line 1a? <i>If 'Yes,' complete Schedule J for such individual</i>		X
4 For any individual listed on line 1a, is the sum of reportable compensation and other compensation from the organization and related organizations greater than \$150,000? <i>If 'Yes,' complete Schedule J for such individual</i>		X
5 Did any person listed on line 1a receive or accrue compensation from any unrelated organization or individual for services rendered to the organization? <i>If 'Yes,' complete Schedule J for such person</i>		X

Section B. Independent Contractors

1 Complete this table for your five highest compensated independent contractors that received more than \$100,000 of compensation from the organization. Report compensation for the calendar year ending with or within the organization's tax year.

(A) Name and business address	(B) Description of services	(C) Compensation

2 Total number of independent contractors (including but not limited to those listed above) who received more than \$100,000 of compensation from the organization ▶ 0

Part VIII Statement of Revenue

Check if Schedule O contains a response or note to any line in this Part VIII

		(A) Total revenue	(B) Related or exempt function revenue	(C) Unrelated business revenue	(D) Revenue excluded from tax under sections 512-514	
Contributions, Gifts, Grants, and Other Similar Amounts	1 a Federated campaigns.....	1 a				
	b Membership dues.....	1 b	125.			
	c Fundraising events.....	1 c	3,894.			
	d Related organizations.....	1 d				
	e Government grants (contributions)....	1 e	30,070.			
	f All other contributions, gifts, grants, and similar amounts not included above....	1 f	39,575.			
	g Noncash contributions included in lines 1a-1f.....	1 g				
	h Total. Add lines 1a-1f.....		73,664.			
Program Service Revenue	Business Code					
	2 a Fees for use of Building		28,902.	28,902.		
	b					
	c					
	d					
	e					
	f All other program service revenue....					
g Total. Add lines 2a-2f.....		28,902.				
Other Revenue	3 Investment income (including dividends, interest, and other similar amounts).....		401.		401.	
	4 Income from investment of tax-exempt bond proceeds					
	5 Royalties.....					
	6 a Gross rents.....	(i) Real				
		(ii) Personal				
		6 b Less: rental expenses	6 b			
		6 c Rental income or (loss)	6 c			
	d Net rental income or (loss).....					
	7 a Gross amount from sales of assets other than inventory	(i) Securities				
		(ii) Other				
		7 b Less: cost or other basis and sales expenses	7 b			
		7 c Gain or (loss).....	7 c			
	d Net gain or (loss).....					
	8 a Gross income from fundraising events (not including \$ _____ of contributions reported on line 1c). See Part IV, line 18.....	8 a				
b Less: direct expenses.....	8 b					
c Net income or (loss) from fundraising events.....						
9 a Gross income from gaming activities. See Part IV, line 19.....	9 a					
b Less: direct expenses.....	9 b					
c Net income or (loss) from gaming activities.....						
10 a Gross sales of inventory, less..... returns and allowances.....	10 a					
b Less: cost of goods sold....	10 b					
c Net income or (loss) from sales of inventory.....						
Miscellaneous Revenue	Business Code					
	11 a					
	b					
	c					
	d All other revenue.....					
e Total. Add lines 11a-11d.....						
12 Total revenue. See instructions.....		102,967.	28,902.	0.	401.	

Part IX Statement of Functional Expenses

Section 501(c)(3) and 501(c)(4) organizations must complete all columns. All other organizations must complete column (A).

Check if Schedule O contains a response or note to any line in this Part IX

Do not include amounts reported on lines 6b, 7b, 8b, 9b, and 10b of Part VIII.	(A) Total expenses	(B) Program service expenses	(C) Management and general expenses	(D) Fundraising expenses
1 Grants and other assistance to domestic organizations and domestic governments. See Part IV, line 21.				
2 Grants and other assistance to domestic individuals. See Part IV, line 22.				
3 Grants and other assistance to foreign organizations, foreign governments, and foreign individuals. See Part IV, lines 15 and 16.				
4 Benefits paid to or for members.				
5 Compensation of current officers, directors, trustees, and key employees.	0.	0.	0.	0.
6 Compensation not included above to disqualified persons (as defined under section 4958(f)(1)) and persons described in section 4958(c)(3)(B).	0.	0.	0.	0.
7 Other salaries and wages.	25,473.	22,726.	2,198.	549.
8 Pension plan accruals and contributions (include section 401(k) and 403(b) employer contributions).				
9 Other employee benefits.				
10 Payroll taxes.	2,028.	1,809.	175.	44.
11 Fees for services (nonemployees):				
a Management.				
b Legal.				
c Accounting.				
d Lobbying.				
e Professional fundraising services. See Part IV, line 17.				
f Investment management fees.				
g Other. (If line 11g amount exceeds 10% of line 25, column (A), amount, list line 11g expenses on Schedule O.)	1,264.	1,264.		
12 Advertising and promotion.	1,236.	481.	506.	249.
13 Office expenses.				
14 Information technology.				
15 Royalties.				
16 Occupancy.	19,820.	19,820.		
17 Travel.				
18 Payments of travel or entertainment expenses for any federal, state, or local public officials.				
19 Conferences, conventions, and meetings.				
20 Interest.				
21 Payments to affiliates.				
22 Depreciation, depletion, and amortization.	29,717.	29,717.		
23 Insurance.	10,659.	10,563.	64.	32.
24 Other expenses. Itemize expenses not covered above. (List miscellaneous expenses on line 24e. If line 24e amount exceeds 10% of line 25, column (A), amount, list line 24e expenses on Schedule O.)				
a <u>Scout Island expense</u>	1,919.	1,919.		
b <u>Unemployment reimbursement</u>	1,247.	1,113.	107.	27.
c <u>Postage and Shipping</u>	287.		113.	174.
d <u>Fund-raising expense</u>	216.			216.
e All other expenses.				
25 Total functional expenses. Add lines 1 through 24e.	93,866.	89,412.	3,163.	1,291.
26 Joint costs. Complete this line only if the organization reported in column (B) joint costs from a combined educational campaign and fundraising solicitation. Check here <input type="checkbox"/> if following SOP 98-2 (ASC 958-720).				

Part X Balance Sheet

Check if Schedule O contains a response or note to any line in this Part X.

		(A) Beginning of year		(B) End of year	
Assets	1	Cash – non-interest-bearing	36,858.	1	70,279.
	2	Savings and temporary cash investments	164,412.	2	164,696.
	3	Pledges and grants receivable, net		3	
	4	Accounts receivable, net		4	
	5	Loans and other receivables from any current or former officer, director, trustee, key employee, creator or founder, substantial contributor, or 35% controlled entity or family member of any of these persons.		5	
	6	Loans and other receivables from other disqualified persons (as defined under section 4958(f)(1)), and persons described in section 4958(c)(3)(B)		6	
	7	Notes and loans receivable, net		7	
	8	Inventories for sale or use		8	
	9	Prepaid expenses and deferred charges	15,449.	9	13,173.
	10a	Land, buildings, and equipment: cost or other basis. Complete Part VI of Schedule D	10a 899,600.		10c 340,536.
	b	Less: accumulated depreciation	10b 559,064.	370,253.	
	11	Investments – publicly traded securities		11	
	12	Investments – other securities. See Part IV, line 11.		12	
	13	Investments – program-related. See Part IV, line 11.		13	
	14	Intangible assets		14	
	15	Other assets. See Part IV, line 11.		15	
16	Total assets. Add lines 1 through 15 (must equal line 33)	586,972.	16	588,684.	
Liabilities	17	Accounts payable and accrued expenses	4,826.	17	7,407.
	18	Grants payable		18	
	19	Deferred revenue	1,360.	19	250.
	20	Tax-exempt bond liabilities		20	
	21	Escrow or custodial account liability. Complete Part IV of Schedule D		21	
	22	Loans and other payables to any current or former officer, director, trustee, key employee, creator or founder, substantial contributor, or 35% controlled entity or family member of any of these persons.		22	
	23	Secured mortgages and notes payable to unrelated third parties		23	
	24	Unsecured notes and loans payable to unrelated third parties	8,860.	24	
	25	Other liabilities (including federal income tax, payables to related third parties, and other liabilities not included on lines 17-24). Complete Part X of Schedule D ..		25	
	26	Total liabilities. Add lines 17 through 25	15,046.	26	7,657.
Net Assets or Fund Balances	Organizations that follow FASB ASC 958, check here <input checked="" type="checkbox"/> and complete lines 27, 28, 32, and 33.				
	27	Net assets without donor restrictions	488,190.	27	494,791.
	28	Net assets with donor restrictions	83,736.	28	86,236.
	Organizations that do not follow FASB ASC 958, check here <input type="checkbox"/> and complete lines 29 through 33.				
	29	Capital stock or trust principal, or current funds		29	
	30	Paid-in or capital surplus, or land, building, or equipment fund		30	
	31	Retained earnings, endowment, accumulated income, or other funds		31	
	32	Total net assets or fund balances.	571,926.	32	581,027.
	33	Total liabilities and net assets/fund balances.	586,972.	33	588,684.

BAA

TEEA0111L 09/22/21

Form 990 (2021)

Part XI Reconciliation of Net Assets

Check if Schedule O contains a response or note to any line in this Part XI

1	Total revenue (must equal Part VIII, column (A), line 12)	1	102,967.
2	Total expenses (must equal Part IX, column (A), line 25)	2	93,866.
3	Revenue less expenses. Subtract line 2 from line 1	3	9,101.
4	Net assets or fund balances at beginning of year (must equal Part X, line 32, column (A))	4	571,926.
5	Net unrealized gains (losses) on investments	5	
6	Donated services and use of facilities	6	
7	Investment expenses	7	
8	Prior period adjustments	8	
9	Other changes in net assets or fund balances (explain on Schedule O)	9	0.
10	Net assets or fund balances at end of year. Combine lines 3 through 9 (must equal Part X, line 32, column (B))	10	581,027.

Part XII Financial Statements and Reporting

Check if Schedule O contains a response or note to any line in this Part XII

		Yes	No
1	Accounting method used to prepare the Form 990: <input type="checkbox"/> Cash <input checked="" type="checkbox"/> Accrual <input type="checkbox"/> Other _____ If the organization changed its method of accounting from a prior year or checked 'Other,' explain on Schedule O.		
2a	Were the organization's financial statements compiled or reviewed by an independent accountant? If 'Yes,' check a box below to indicate whether the financial statements for the year were compiled or reviewed on a separate basis, consolidated basis, or both: <input type="checkbox"/> Separate basis <input type="checkbox"/> Consolidated basis <input type="checkbox"/> Both consolidated and separate basis		X
2b	Were the organization's financial statements audited by an independent accountant? If 'Yes,' check a box below to indicate whether the financial statements for the year were audited on a separate basis, consolidated basis, or both: <input type="checkbox"/> Separate basis <input type="checkbox"/> Consolidated basis <input type="checkbox"/> Both consolidated and separate basis		X
2c	If 'Yes' to line 2a or 2b, does the organization have a committee that assumes responsibility for oversight of the audit, review, or compilation of its financial statements and selection of an independent accountant? If the organization changed either its oversight process or selection process during the tax year, explain on Schedule O.		
3a	As a result of a federal award, was the organization required to undergo an audit or audits as set forth in the Single Audit Act and OMB Circular A-133?		X
3b	If 'Yes,' did the organization undergo the required audit or audits? If the organization did not undergo the required audit or audits, explain why on Schedule O and describe any steps taken to undergo such audits.		

BAA

TEEA0112L 09/22/21

Form 990 (2021)



MASSACHUSETTS DEPT. OF REVENUE
 PO Box 7010
 Chelsea, MA 02150-7010



NAVJEET K. BAL, COMMISSIONER
 TERESA O'BRIEN-HORAN, DEPUTY COMMISSIONER



CONCORD SCOUT HOUSE INC
 PO BOX 73
 CONCORD MA 01742-0073

870C

Notice 30048
 Exemption
 Number 042 104 027
 Date 12/01/08
 Bureau TSD MGT SERV
 Phone (617) 887-6367

Dear Taxpayer,

A review of our records indicates that the Massachusetts sales/use tax exemption for **CONCORD SCOUT HOUSE INC**, a tax-exempt 501(c) (3) organization, will expire on **01/04/09**.

The Department of Revenue is issuing this notice in lieu of a new Form St-2, "Certificate of Exemption". The notice verifies that the Massachusetts Department of Revenue has renewed the sales/use tax exemption for **CONCORD SCOUT HOUSE INC** subject to the conditions stated in Massachusetts General Laws, Chapter 64H, sections 6(d) or (e), as applicable.

*The organization remains responsible for maintaining its exempt status and for reporting any loss or change of its status to the Department of Revenue. Absent the Department of Revenue's receipt of information from the taxpayer by the expiration date of the current certificate that the entity no longer holds exempt status under the above provisions, the taxpayer's certificate is renewed. **This renewal will expire on 01/04/19.***

The taxpayer's existing Form ST-2, in combination with this renewal notice may be presented as evidence of the entity's continuing exempt status. Provided that this requirement is met, all purchases of tangible personal property by the taxpayer are exempt from sales/use taxation under Chapter 64H or I respectively, to the extent that such property is used in the conduct of the purchaser's business.

Any abuse or misuse of this notice by any tax-exempt organization or any unauthorized use by any individual constitutes a serious violation and will lead to revocation. **Willful misuse of this notice is subject to criminal sanctions of up to one year in prison and \$10,000 in fines (\$50,000 for corporations).**

This notice may be reproduced.

Sincerely,

Navjeet K. Bal
 Commissioner of Revenue



Form ST-2
Certificate of Exemption

Massachusetts
Department of
Revenue

Certification is hereby made that the organization herein named is an exempt purchaser under General Laws, Chapter 64H, sections 6(d) and (e). All purchases of tangible personal property by this organization are exempt from taxation under said chapter to the extent that such property is used in the conduct of the business of the purchaser. Any abuse or misuse of this certificate by any tax-exempt organization or any unauthorized use of this certificate by any individual constitutes a serious violation and will lead to revocation. Willful misuse of this Certificate of Exemption is subject to criminal sanctions of up to one year in prison and \$10,000 (\$50,000 for corporations) in fines. (See reverse side)

CONCORD SCOUT HOUSE INC
WALDEN ST
CONCORD MA 01762

EXEMPTION NUMBER E
642-104-027
ISSUE DATE
03/06/99
CERTIFICATE EXPIRES ON
03/06/04

NOT ASSIGNABLE OR TRANSFERABLE

ACTING COMMISSIONER OF REVENUE
BERNARD F CROWLEY JR

August 29, 2023

To Whom It May Concern,

As the Flintlock Districtⁱ Unit Commissioner for the Concord Boy Scouts, I enthusiastically support efforts to repair and upgrade The Scout House.

This historic building hosts countless scouting activities that build character and create lifelong memories. From weekly troop meetings to Eagle Scout ceremonies to pinewood derby competitions and storage of troop equipment, The Scout House is central to delivering our mission.

Unfortunately, the well-worn floors now present safety concerns. In the winter months the scouts remove their shoes to reduce salt and water damage to the floors. Due to splintering, that is no longer advisable, which will lead to accelerated further deterioration of the floors. Replacing the floor will allow The Scout House to continue serving scout families for generations to come.

Your support for this important project will be greatly appreciated by our scouts and the entire community. Please reach out with any questions.

Thank you for your consideration.

Yours in scouting,



David Owen

ⁱ The Flintlock District includes Concord and surrounding towns within the Spirit of Adventure council in the Boy Scouts of America.

girl scouts
of eastern
massachusetts

September 6, 2023

Emily Smith
Service Unit Coordinator
Concord Carlisle Girl Scouts
Concord, MA 01742
ccgssucoordinator@gmail.com

Concord Community Preservation Committee
% Ann Clifford, Senior Planner
141 Keyes Rd
Concord, MA 01742

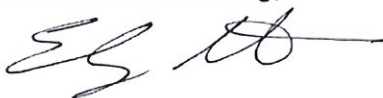
Dear Ms. Clifford and Members of the Concord Community Preservation Committee,

In collaboration with my colleague, Meredith Keybl, I run the Concord Carlisle Girl Scout (CCGS) program for more than 240 girls and 170 adult volunteers in Concord and Carlisle. I am writing on behalf of the Girl Scouting program in Concord in support of the Concord Scout House's request for funding from the Concord Community Preservation Fund to replace the flooring in the Main Hall.

CCGS strongly supports the Scout House Board's request for funding to replace the floor in the Main Hall. The Girl Scouts use that space regularly for events ranging from troop meetings, adult volunteer training, community service projects, award ceremonies, scouting overnights, and educational programs. It is essential that the space be safe for use by all ages and abilities in order for the Girl Scouts to achieve their mission of building girls of courage, confidence and character.

Currently the floor has deteriorated to the point of splinters and chunks of wood breaking loose, creating an unsafe situation. The Concord Girl Scouts acquired the barn that is now known as the Scout House in 1930. We would greatly appreciate the support of the community to continue to make the Scout House available for the next 100 years. Thank you for your consideration.

Yours in Girl Scouting,



Emily Smith
Service Unit Coordinator
Concord Service Unit 340
Girl Scouts of Eastern Massachusetts

94 Old Lowell Road
Westford, MA 01886

September 3, 2023

Community Preservation Committee
Town of Concord
Concord, MA 01742

To the Committee,

I write in support of the Concord Scout House, Incorporated's application for Community Preservation Act funding to achieve their main hall floor replacement project.

The Concord Scout House is a wonderful historic and vital resource for the Concord area community. The well worn maple floor in the main ("dance") hall has literally supported close to a century's worth of Scout ceremonies and meetings, theater productions, community events and private ceremonies of all types. In particular, the Scout House is a renowned venue for folk dancing world-wide and the recreational dance community has great passion regarding the appearance and safety of the dance floor within this venerable venue.

As a dance community member and dance organizer, the Scout House is a fantastic resource and we love the flooring material and surface. However, the present floor has been degrading into a safety issue due to the effects of long term wear leading to dangerous spots including large splinters. The Scout House staff has been doing their best to make patch repairs but there is simply too little flooring thickness left in key spots to continue doing so safely and prevent buckling of the floor.

My understanding is that the Scout House intends to replace the flooring material with new hardwood of the same species and dimensions as that laid down when the Stow Barn was originally converted to the Scout House. This selection will preserve the historic character of the hall and ready it for another century or more of valued service to the Concord area.

I fully endorse the Concord Scout House, Inc. application for Concord, MA Community Preservation Act funding to achieve this project. I believe that this project is a wise investment in the community and will benefit residents of all ages for many years to come.

Sincerely,



Donald Veino

Dance Caller and Organizer, Monday Contras at the Concord Scout House

Magenta Dance Place LLC
Sergiy Georgiyev
6 School Street
Acton, MA 01720
www.magentadanceplace.com
351-218-9309
August 22, 2023

Dear Members of the Concord Community Presentation Committee,

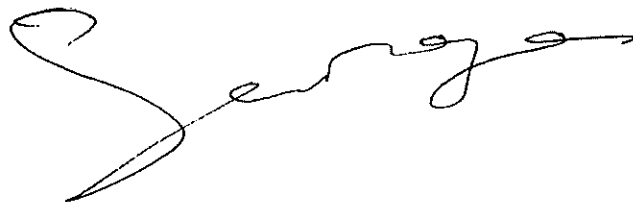
I'm writing to wholeheartedly support the grant application from the Concord Scout House Board. As Ballroom Dance teachers for Concord Middle Schoolers at the Scout House, we've seen its remarkable impact on the children and the surrounding community. We fully endorse the project to upgrade the hall's wooden floor, believing it will greatly enhance the space for all users.

The current floor's condition is concerning, showing wear and tear that risks the safety of students. We know a safe environment is crucial for Middle Schoolers. A new floor will ensure safety and elevate the learning experience

The Scout House has been a crucial focal point within the community for years, serving as a hub for events and classes. The proposed floor replacement aligns with its commitment to inclusivity and accessibility. This investment showcases the board's dedication to preserving the facility's history and value.

In closing, please approve the grant for the Scout House's floor replacement. This will benefit Ballroom Dance students, teachers, and the whole community. Thank you for your consideration.

Sincerely,
Sergiy Georgiyev
Magenta Dance Place Team

A handwritten signature in black ink, appearing to read 'Sergiy', with a large, decorative flourish at the beginning and end.



NEFFA

Web: www.neffa.org

president@neffa.org

New England Folk Festival Association

P.O. Box 2789 • Acton MA 01720

NEFFA is a 501(c)(3) public charitable organization

Concord Community Preservation Committee
% Robert Kiihne
15 Water Street
Concord, MA 01742
via email: Rkiihne@gmail.com

25 August 2023

Mr. Kiihne and members of the Concord Community Preservation Committee:

I am honored to be writing a letter in support of the Concord Scout House's grant application to replace the dance floor in the Scout House. For decades, this historic landmark building has served as a community center for many groups, notably traditional folk dancers.

I am both an avid folk dancer and the President of the New England Folk Festival Association (NEFFA). NEFFA has produced an annual Folk Festival for 79 years, and occasionally produces other dances around the Boston area. I fondly remember dancing with my children over 15 years ago at Family Dances sponsored by NEFFA at the Scout House, and I was thrilled when the Thursday Night Contras (also sponsored by NEFFA) moved to the Scout House in 2006.

Traditionally-constructed wood dance floors - such as the Concord Scout House has - are a joy to dance on - they move with the dancers, and do not fight back. My knees appreciate this. At a recent dance at the Scout House, I was concerned to notice several places where the floor was uneven and might cause an unsafe situation for a contra dancer. The floor may be part of history, but it needs to be maintained or replaced periodically, and that time has come.

So I am writing to add my unqualified support to the Concord Scout House's application to replace the floor so folk dancers and others can continue to enjoy community-building events there for years to come.

Regards,

Jonathan Young
President, NEFFA

