



[Newsletter Archive](#)

## In This Issue

1. [Topic 1](#): Nearmap AI
2. [Topic 2](#): Exploring the Possibilities of ArcGIS Experience Builder
3. [Topic 3](#): 10 Years of Nearmap
4. [Map/App Gallery](#)

[Back to Top](#)

## 1 . Nearmap AI

As noted in the July Newsletter, Nearmap offers services based on its highly detailed imagery, including feature layers extracted from the imagery via Artificial Intelligence. Concord GIS has received and processed shapefiles based on this data, resulting in:

- A new Swimming Pools layer (Staff Webmap and ArcMap) as requested by Assessing

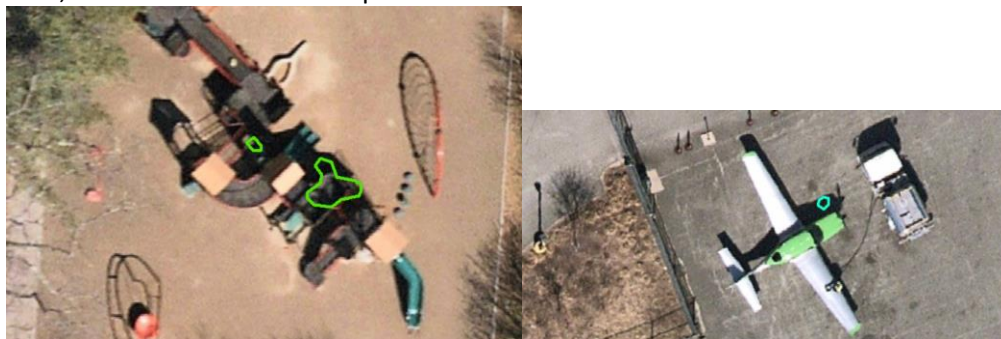


- Significant updates to the Buildings layer, including new buildings, additions to existing buildings, and numerous outbuildings.

As you might anticipate, AI is not yet perfect. For example, the [Building Footprints](#) AI layer produced some anomalies (example: bright blue):



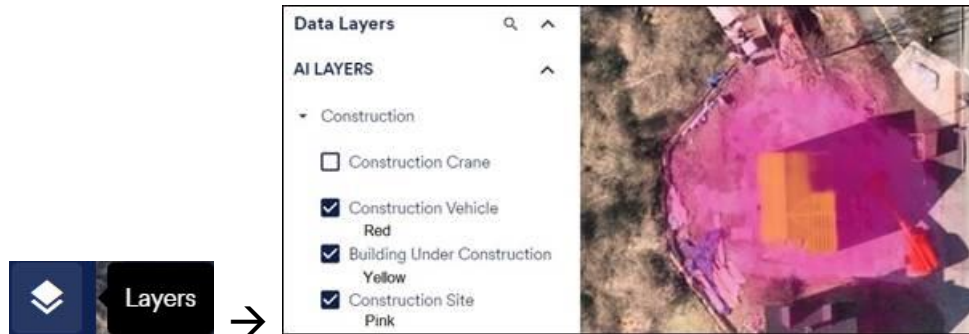
The construction-related layers also required 'curating'. The presence of Wheeled Construction Vehicles (bright green) doesn't *always* indicate construction in progress. Some playground equipment can set off the algorithms, as can the occasional airplane:



The Buildings Under Construction AI layer was most productive, with 14 out of 14 valid identifications of location (if not exact shape):



You can continue to view the original AI layers in your Nearmap account by making sure you're in Overhead View mode, and then clicking on the Layers icon (upper left):



If you don't have a Nearmap account and would like one, just [email](#) me and I'll send you an invitation!

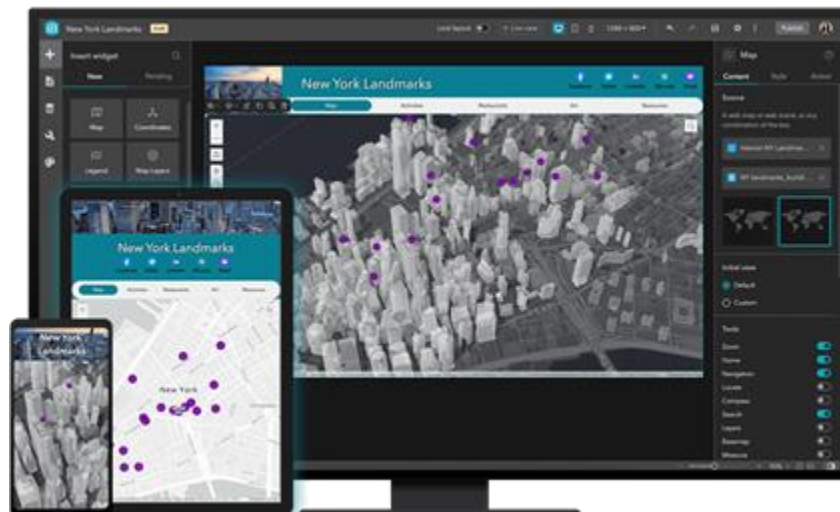
■ *Jill Moonheron*

[Back to Top](#)

## 2 . Exploring the Possibilities of ArcGIS Experience Builder

Have you ever wanted to create a data-driven web application to explore assets, solve problems, and collaborate across departments? Or better yet, have you wanted someone else to create one for you? The GIS team can do just that!

With ESRI's latest web app solution, we can efficiently create engaging web applications that allow users to collect, share, and edit real-time authoritative data; streamline or combine multiple workflows; and gain insights through interconnected widgets. **ArcGIS Experience Builder** is an out-of-the-box app that requires no coding skills and yet is highly configurable and customizable! Just start with one of numerous data-centric or map-centric templates and adjust the layout, pages, and drag-and-drop widgets according to your needs.



Building upon previous technologies, Experience Builder now allows users to combine 2D and 3D data into one seamless app. Users can configure filters, time sliders, charts, survey forms, and several other widgets to explore both spatial and non-spatial data, imagery, and other media. Additionally, Experience Builder's mobile-optimization is a significant upgrade over earlier solutions.

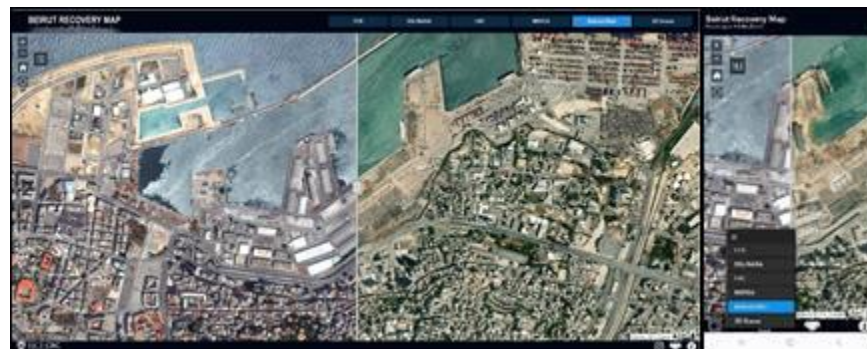
Mobile-optimization builds upon mobile-responsiveness, in which an app can detect screen size and automatically adjust the layout of the view. With mobile-optimization, authors can pre-configure different layouts for different screen sizes and even change or limit which elements are available for mobile versus desktop use. For example, command operations may wish to see an entire dashboard and map of an event, while field officers may just need to interact with the map on their phones. Assuming there is access to the internet on all devices, these elements will sync between platforms, providing unique but cohesive experiences for all users.

ESRI hosts the [ArcGIS Experience Builder Gallery](#) showcasing diverse web applications built with this technology by the GIS community. Explore and imagine what you could do with your data!

Create a publicly-accessible map of event parking, updated with changes in real-time, like [The City of Roswell, Georgia's Annual 4<sup>th</sup> of July Celebration](#).



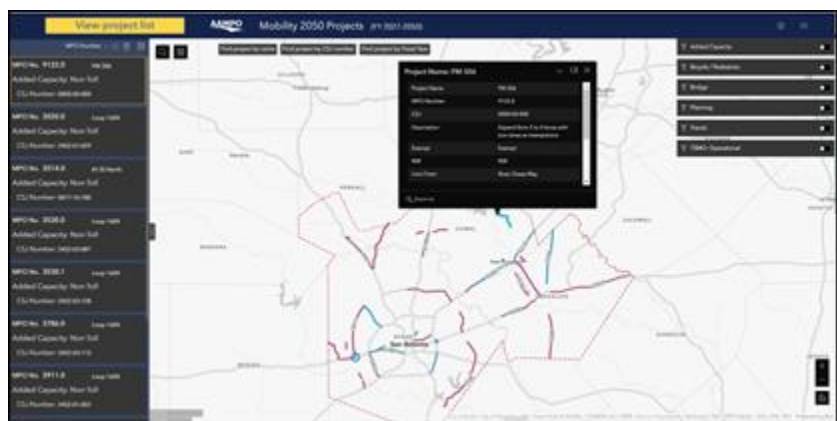
Show changes over time, like the [Rice University Spatial Studies Lab's Beirut Recovery Map](#).



Promote town-maintained trails with level of difficulty, elevation profiles, directions to trail access points, and downloadable trail maps, like the [Lake Country Trail Map](#).



Communicate progress of transportation projects across town, like the [Alamo Area Metropolitan Planning Organization’s Mobility 2050 Projects](#).



If you can imagine it, we can help you build it – email us to set up a meeting!

■ *Heather Bhowmick*

[Back to Top](#)

### 3. 10 Years of Nearmap

Although the Town of Concord has only been subscribing to Nearmap’s imagery service for the past few year, their archive dates back to 2014, and we have access to all past imagery. Here’s a retrospective on major capital projects over the past decade, as illustrated by Nearmap.

#### Nuclear Metals Superfund Site



High School



Middle School

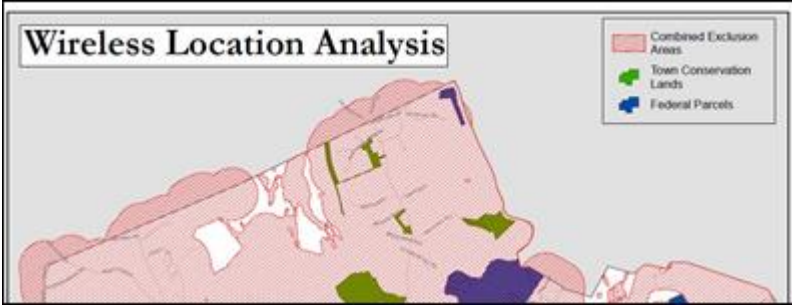
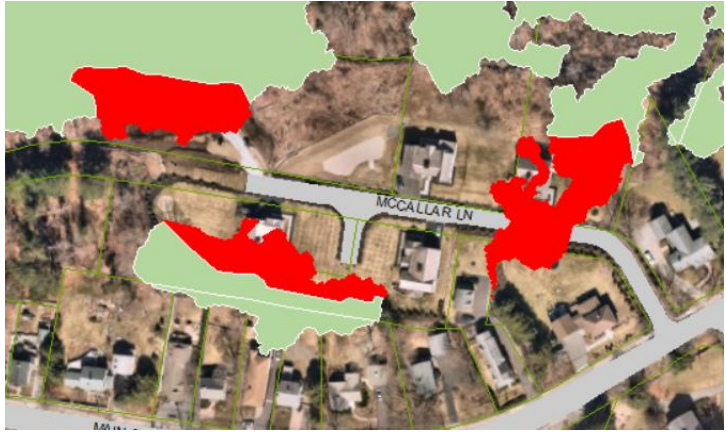



■ Jill Moonheron  
[Back to Top](#)

## 4. Map/App Gallery

*CTRL-Click on a thumbnail to view a full-size map*

<p><b>MBTA Communities</b></p>		<p>Created and posted two new layers on the Public Webmap to show the MBTA Station Areas</p>
------------------------------------	--	--

		(1/2-mile buffer) and Excluded areas, at the request of Elizabeth H.
<p><b>Townwide Wireless Analysis</b></p>	 <p><b>Wireless Location Analysis</b></p> <ul style="list-style-type: none"> <li>Combined Exclusion Areas</li> <li>Town Conservation Lands</li> <li>Federal Parcels</li> </ul>	<p>Updated <a href="#">Townwide Wireless Analysis</a> map for Jason B</p>
<p><b>Land Cover Analysis</b></p>	 <p>Example: Loss of Palustrine Forested Wetland (red = 2016, green = 2023)</p>	<p>Analyzed the 2016 MassGIS Land Cover / Land Use layer based on 2013 imagery, to identify changes in Forested and Agricultural lands, for Delia K and the upcoming Open Space &amp; Recreation Plan</p>
<p><b>Employee Appreciation Picnic Parking</b></p>	 <p><b>Employee Appreciation Picnic 2023</b>  <b>SEPTEMBER 20, 2023 @ NOON - 4 PM</b>  <b>CPW RIVERFRONT PARK</b></p>	<p>Prepared traffic flow and parking map for the 2023 Town of Concord Employee Appreciation Picnic at CPW Riverfront Park.</p>

[Back to Top](#)