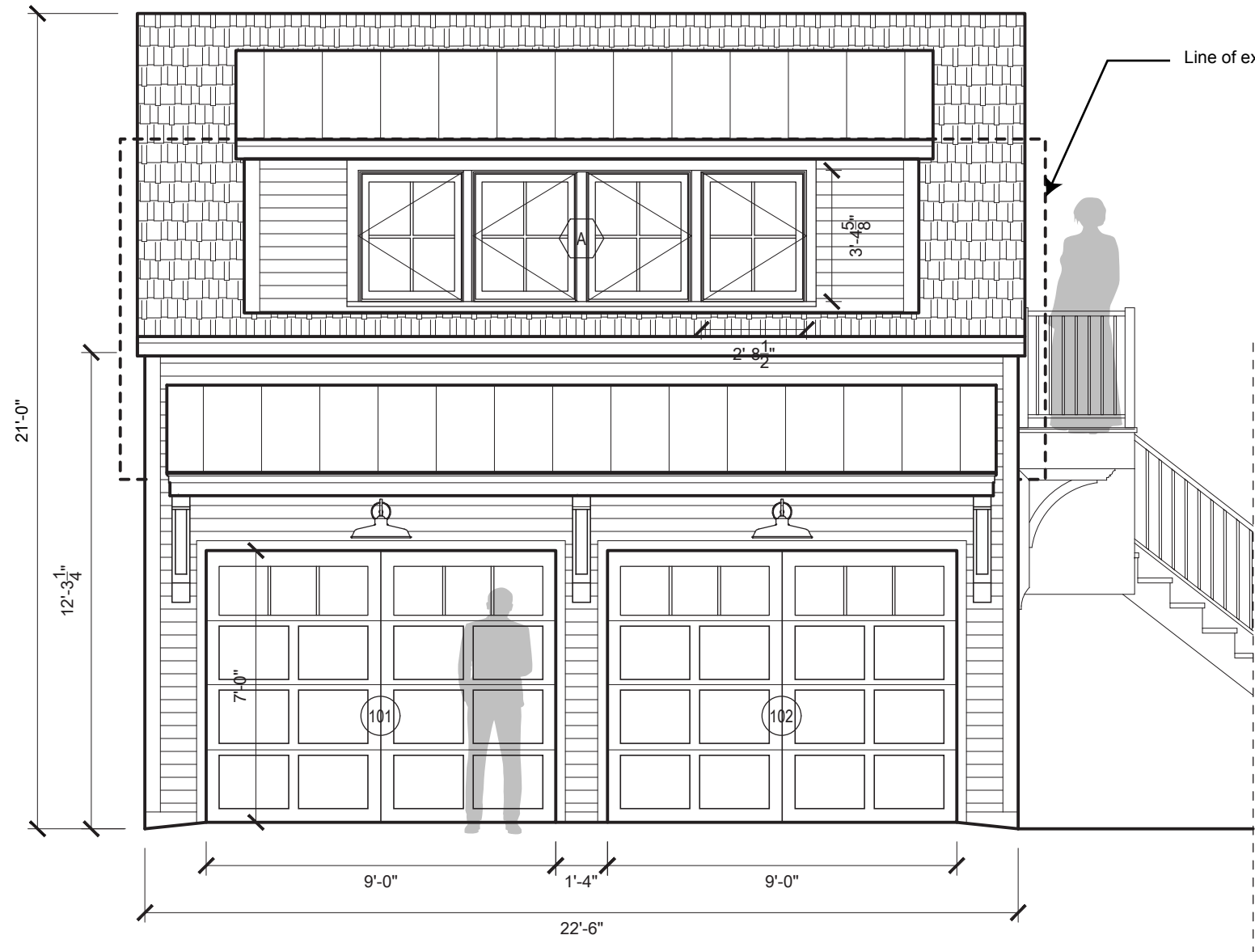
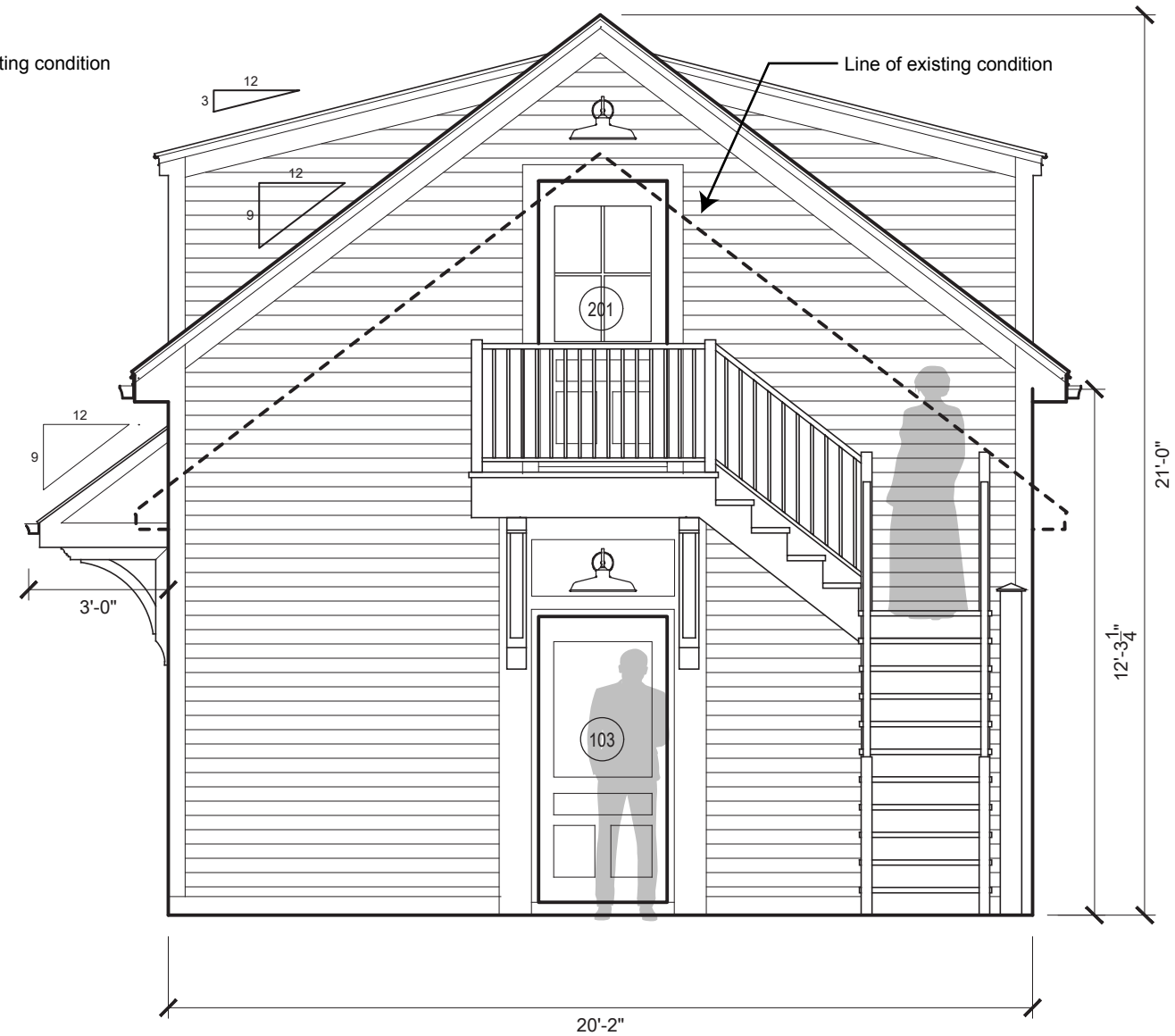


Color and Material Palette to match principal dwelling:

- asphalt roofing on primary roof
- metal roof on dormer and awning
- painted wood siding (blue) and painted trim (white)
- windows with black mullions and white casing
- decorative / engineered brackets to support awning and stair platforms
- painted black garage door with glass lites

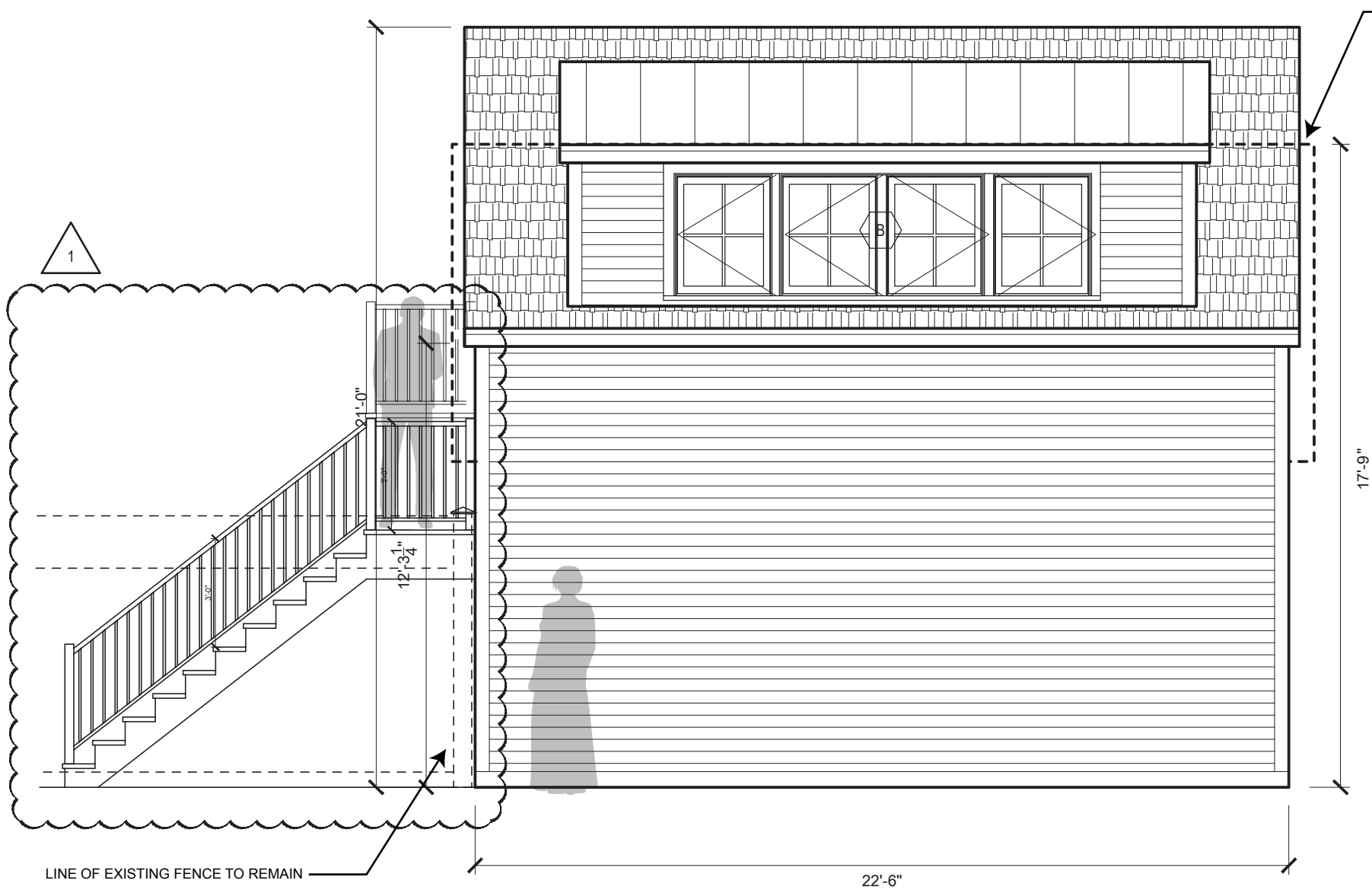


PROPOSED ELEVATION (FACING HUBBARD STREET) - SCALE 1/4" = 1'-0"

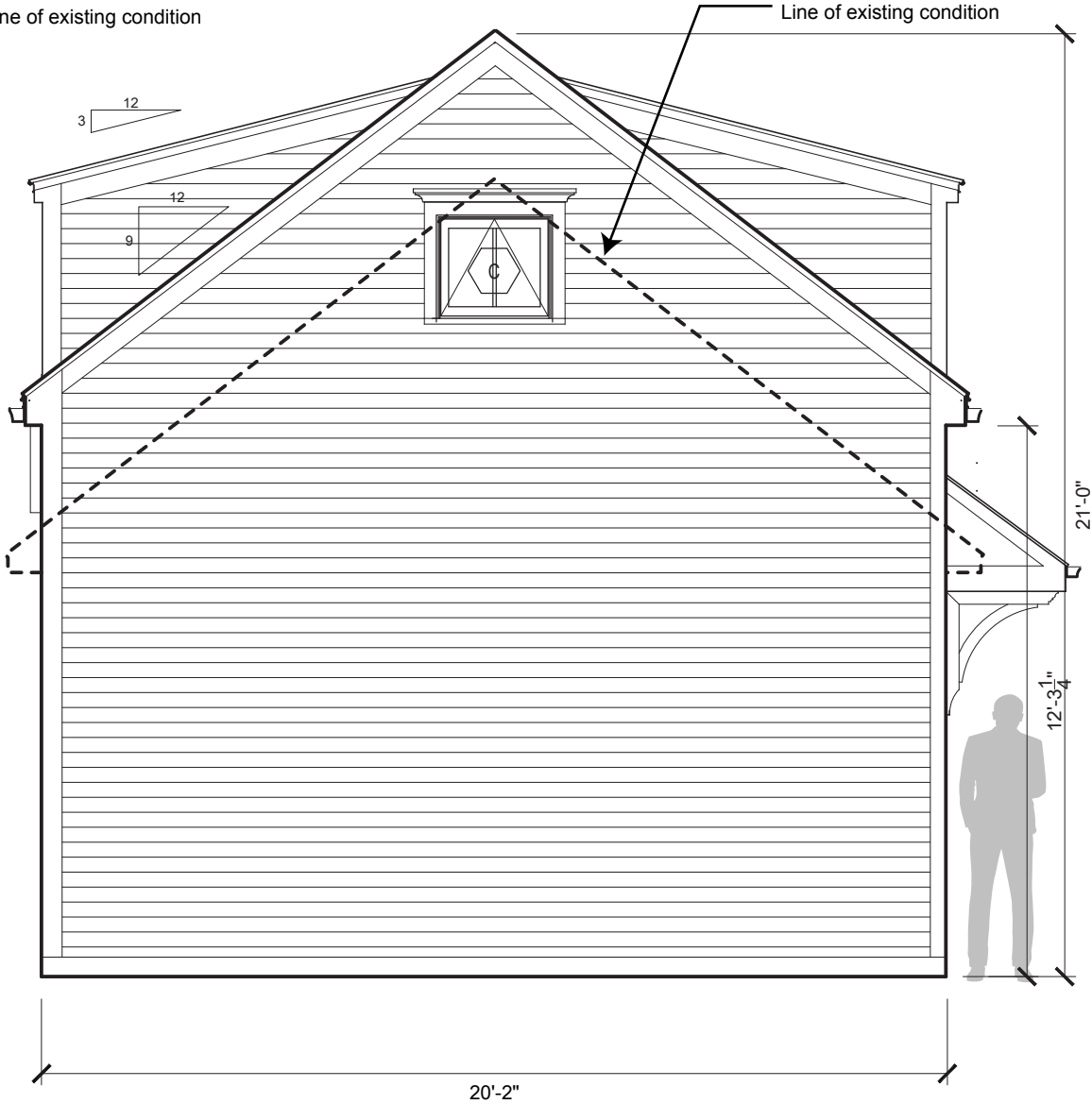


PROPOSED ELEVATION (FACING THOREAU STREET) - SCALE 1/4" = 1'-0"

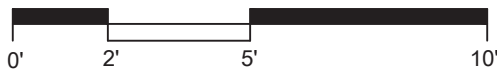
- Color and Material Palette to match principal dwelling:
- asphalt roofing on primary roof
 - metal roof on dormer and awning
 - painted wood siding (blue) and painted trim (white)
 - windows with black mullions and white casing
 - decorative / engineered brackets to support awning and stair platforms
 - painted black garage door with glass lites



PROPOSED ELEVATION (FACING SIDE YARD) - SCALE 1/4" = 1'-0"

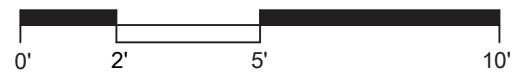


PROPOSED ELEVATION (FACING SIDE YARD) - SCALE 1/4" = 1'-0"



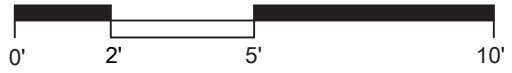


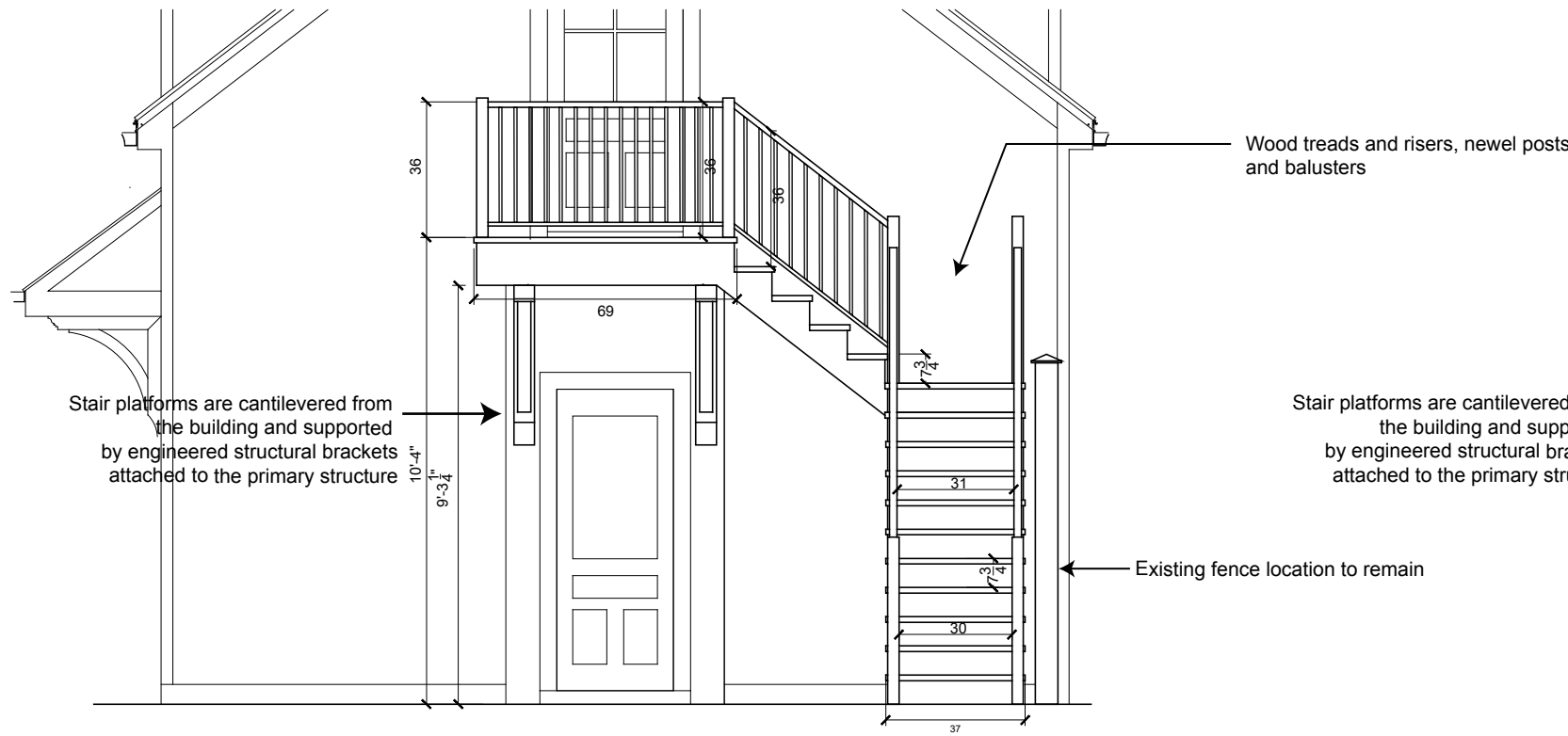
EXISTING ELEVATION (FACING HUBBARD STREET) - SCALE 1/4" = 1'-0"



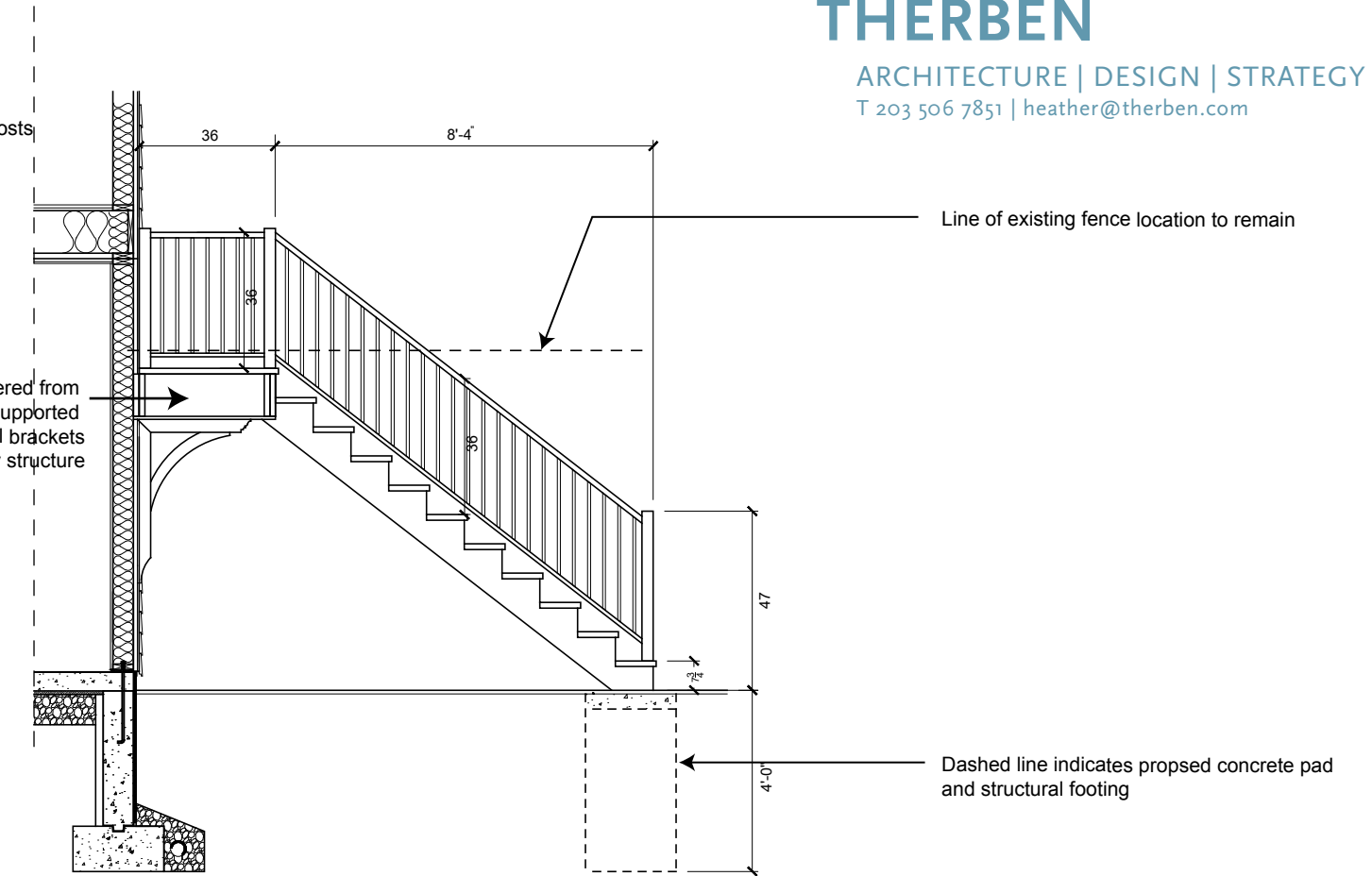


EXISTING ELEVATION (FACING THOREAU STREET) - SCALE 1/4" = 1'-0"

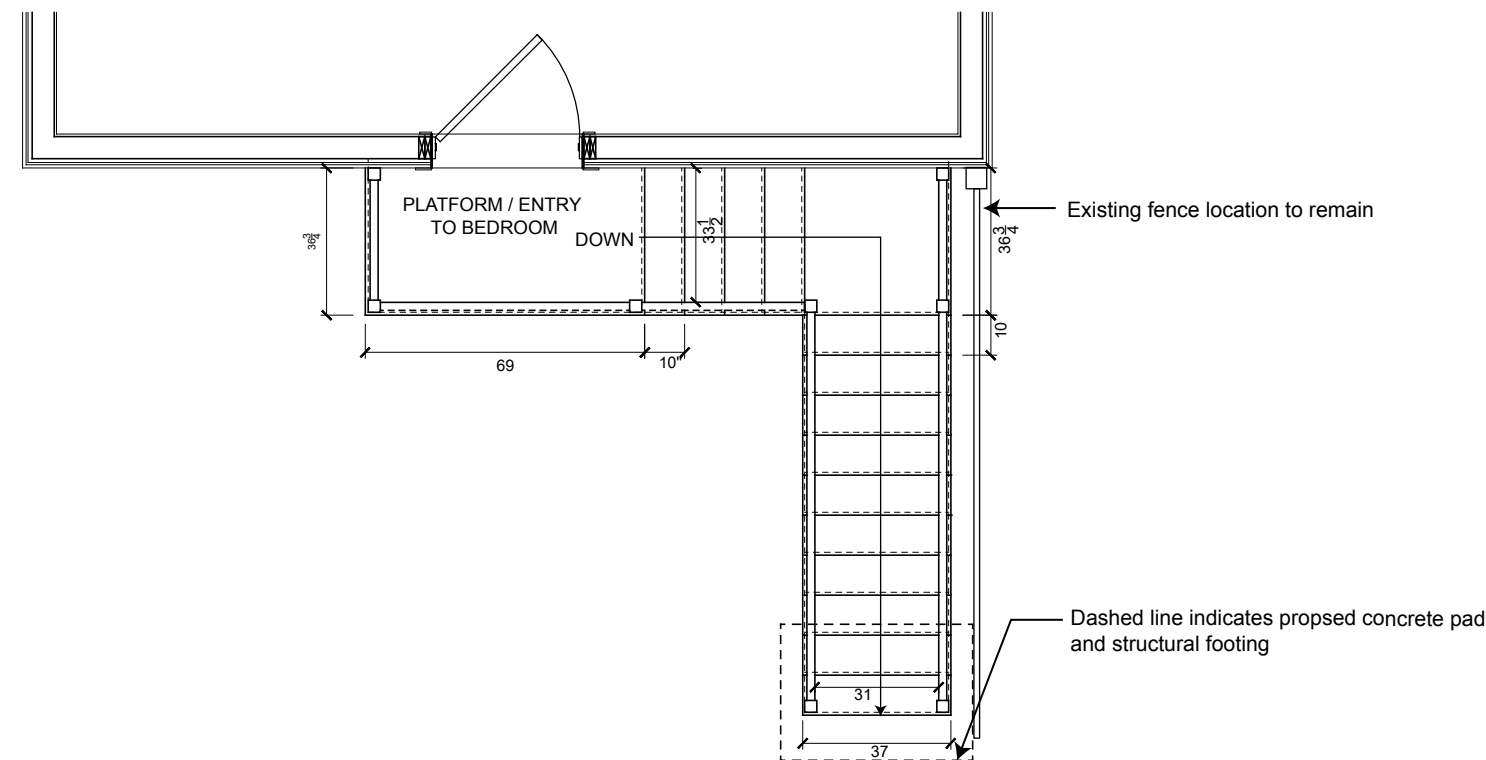




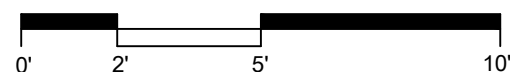
STAIR ELEVATION - SCALE 1/4" = 1'-0"



STAIR SECTION - SCALE 1/4" = 1'-0"



STAIR PLAN - SCALE 1/4" = 1'-0"



EXTERIOR EGRESS STAIR – GENERAL CONSTRUCTION NOTES (Per 780 CMR R311, R312, R317, R301)

- Stair Geometry & Configuration**
 Stair width: 26" clear minimum above handrail height per 780 CMR R311.7.1. Where a single handrail is present, allowable clear width below handrail = 31½", therefore a 26" stair is permitted. Stair shall consist of (4) 2x12 PT stringers, spaced as required for tread material load capacity. Platforms/landings framed with 2x12 PT construction, supported by engineered brackets attached to the building structure per manufacturer's requirements and R301.
- Treads & Risers**
 Maximum riser height: 7¾"; minimum riser height: 4" (R311.7.5.1). Minimum tread depth: 10" measured horizontally between nosings (R311.7.5.2). Tread and riser uniformity: variation shall not exceed ⅜" (R311.7.5.1 & .5.2). Nosing projection where required: ¼"-1¼", uniform within the flight; nosing radius ≤ 9/16" (R311.7.5.3).
- Bottom of Exterior Stair – Typical Support**
 Provide 4"-6" concrete pad at grade for stair bearing, min. 24" x 24" or stair width, whichever is greater. Pad to bear on 8" min. compacted granular base. Provide concrete footing or pier below pad to 48" min. below finished grade, sized per 780 CMR and structural requirements. Coordinate exact footing size and reinforcement with structural engineer or contractor where required. All stair framing and stringers to be pressure-treated or otherwise decay-resistant (780 CMR R317).