



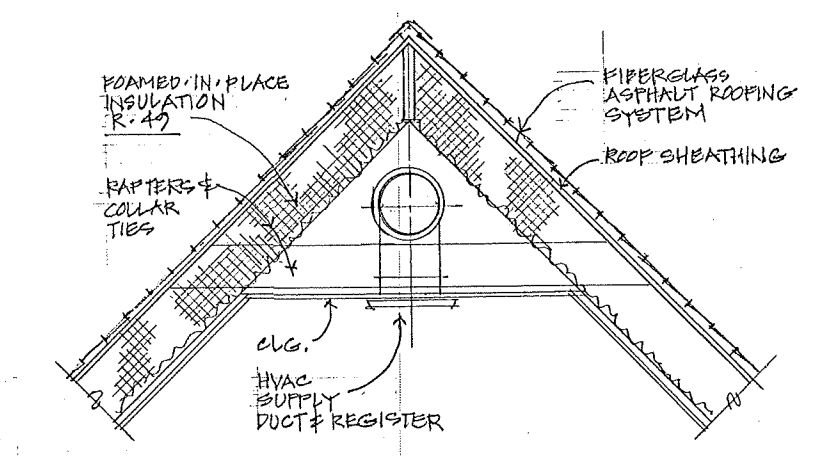
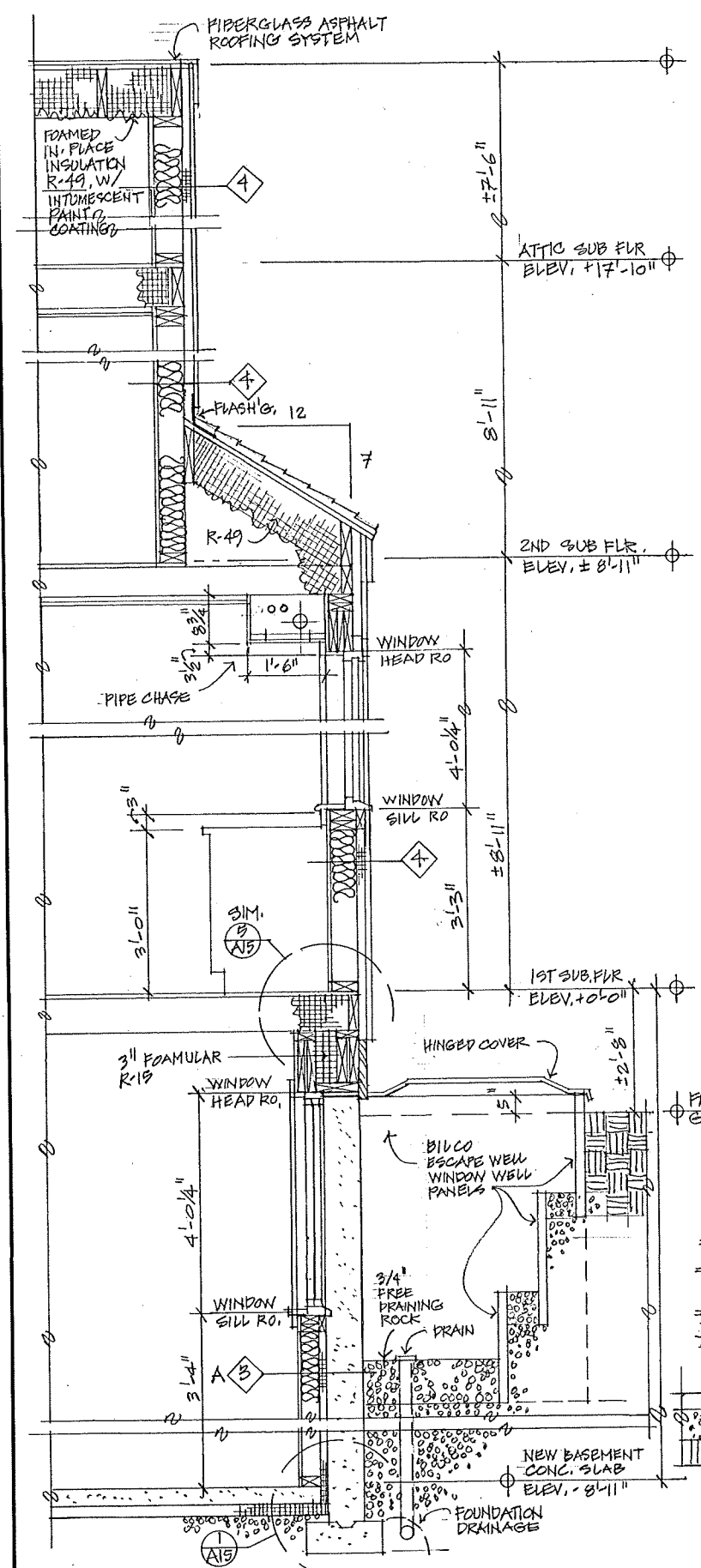
| REVISIONS | BY |
|-----------|----|
| | |
| | |
| | |
| | |
| | |
| | |
| | |
| | |
| | |

Casentini Incorporated
 planning architecture interior design
 11 Waverley Avenue
 Newton, MA 02458
 t 617 467 5072

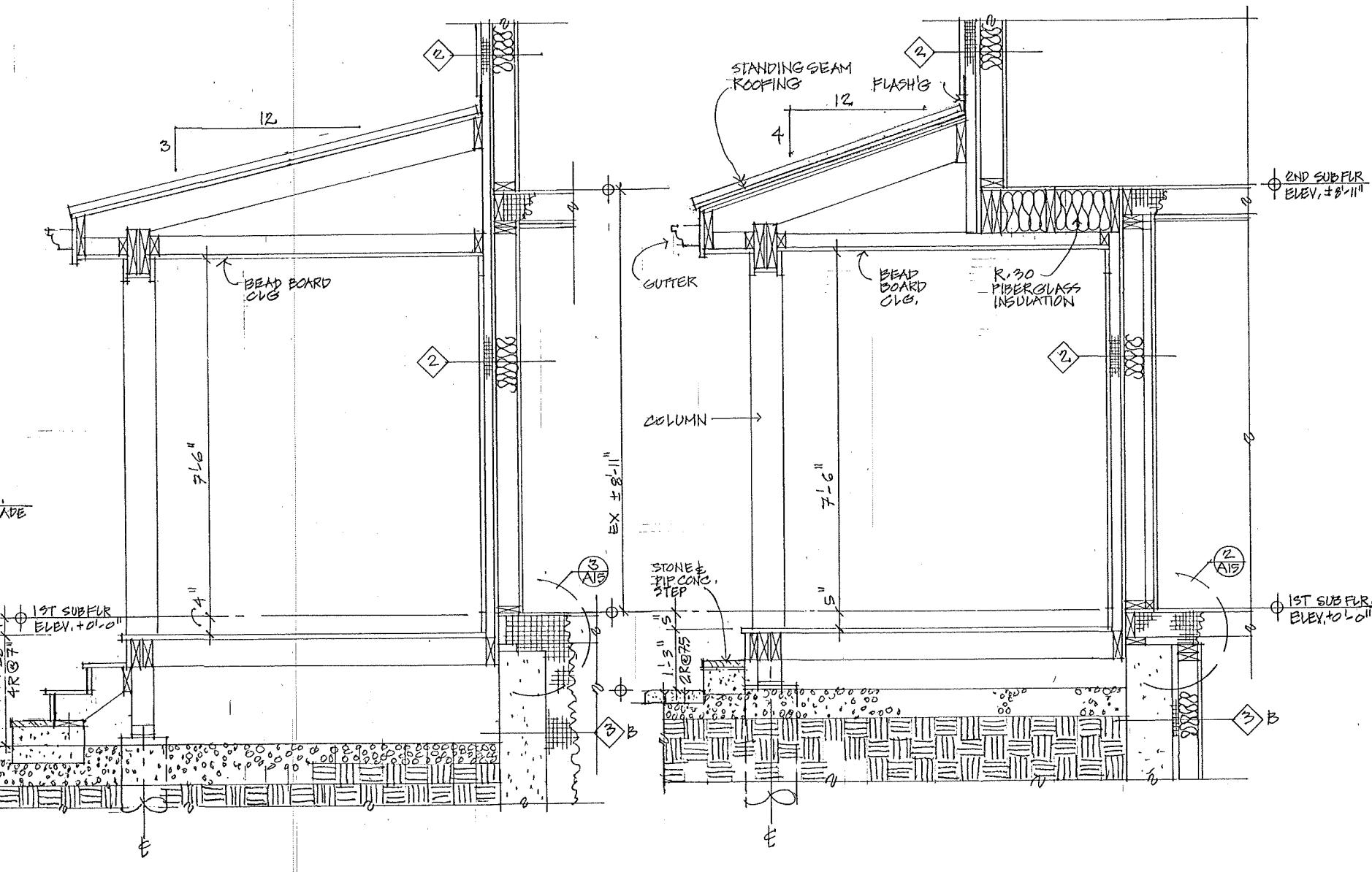
Donovan Residence Renovations & Additions
 62 Crest Street
 Concord, MA 01742

BUILDING SECTIONS

Date 12.26.25
 Scale 3/4" = 1'-0"
 Drawn
 Job
 Sheet **A14**
 of 14 Sheets



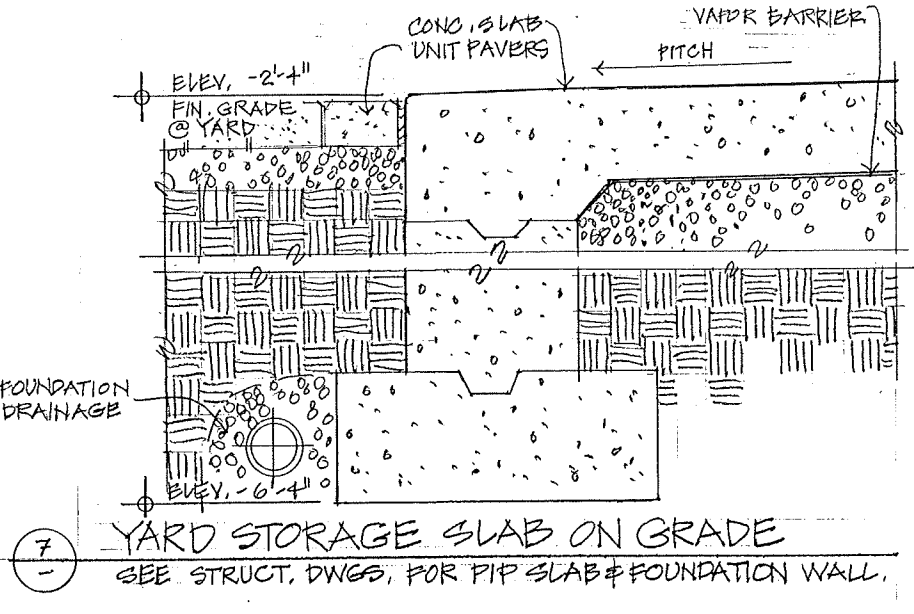
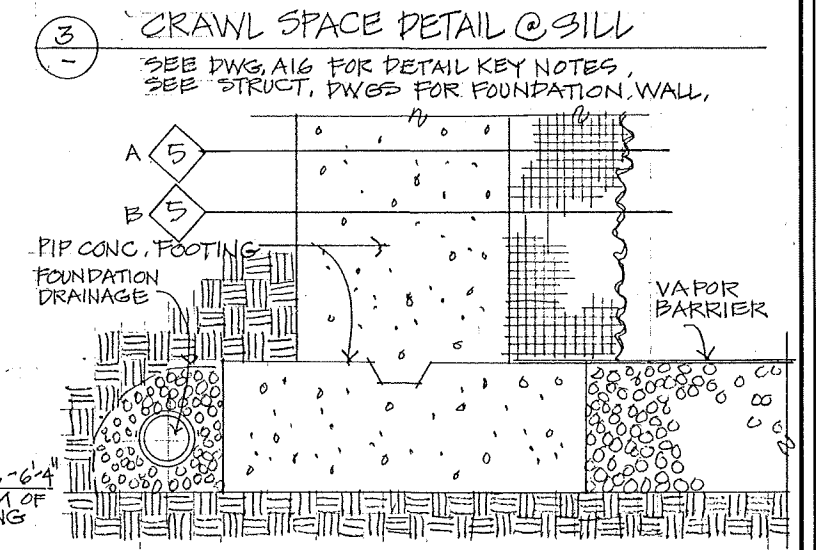
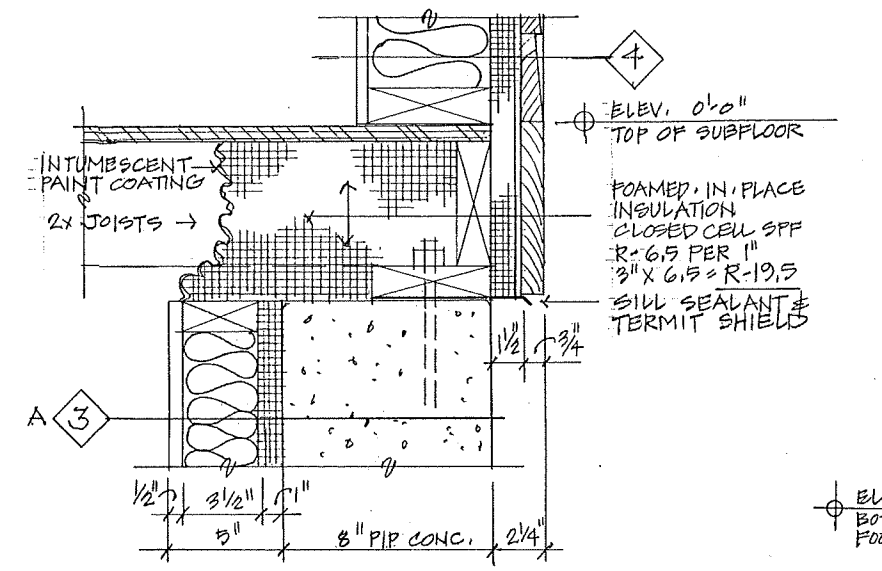
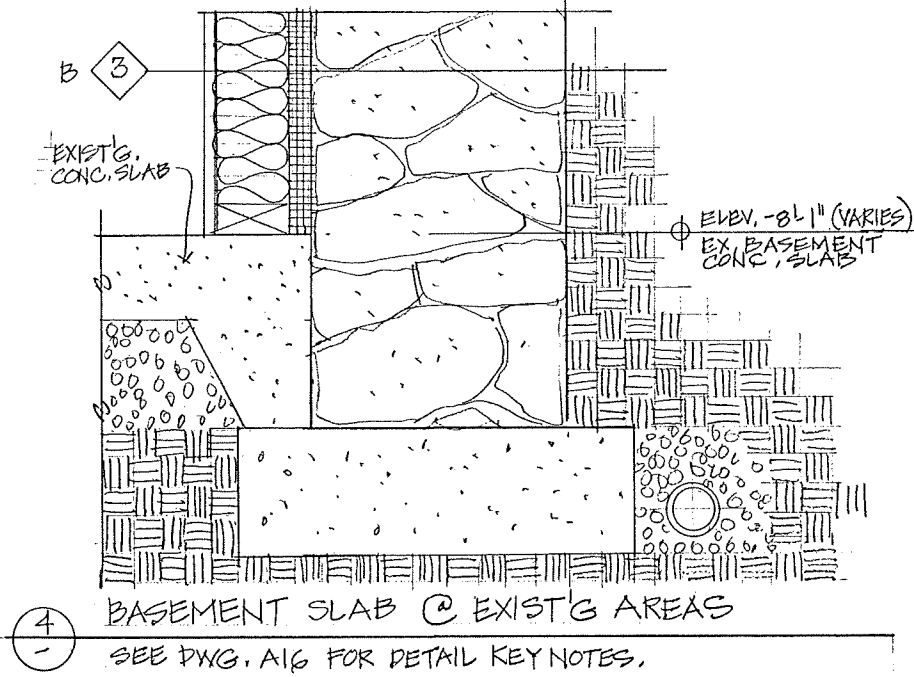
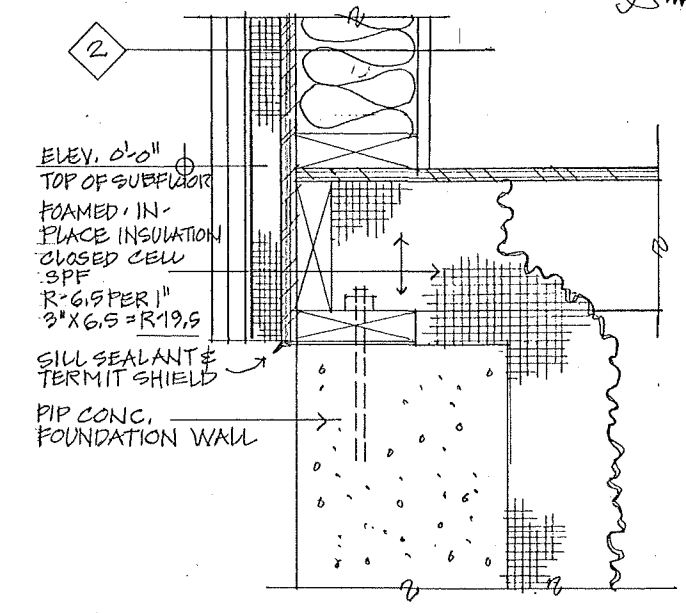
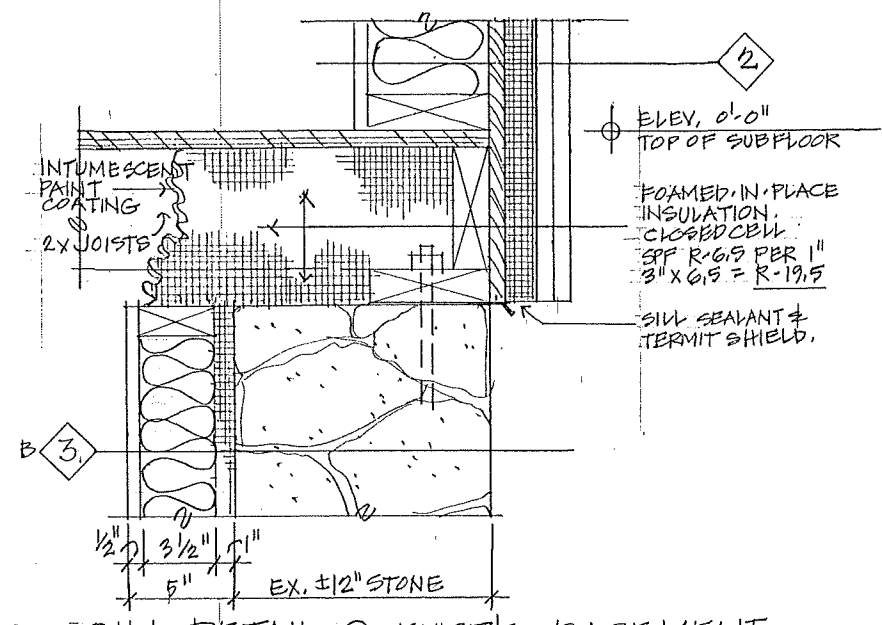
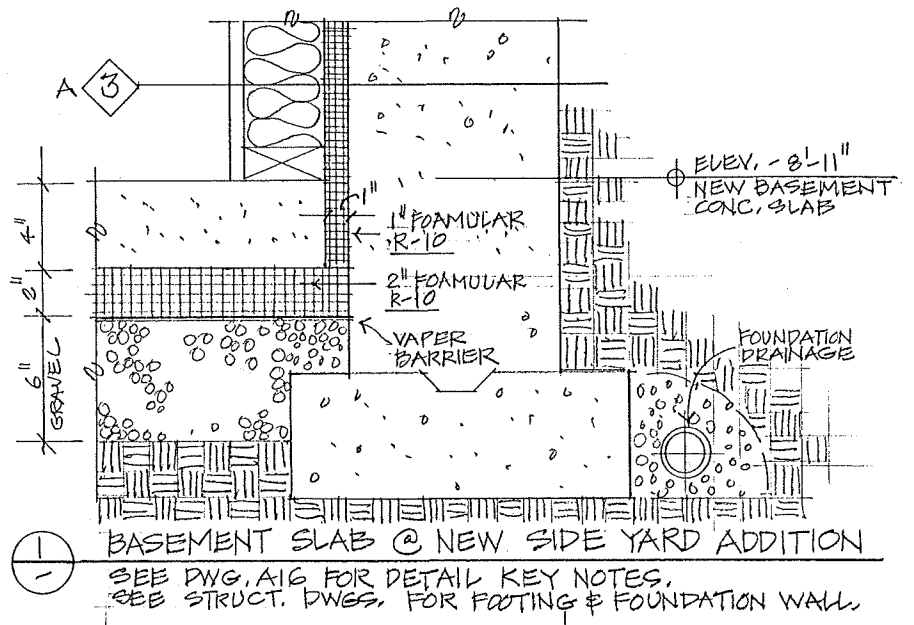
1 ROOF RIDGE @ VAULTED CEILINGS.
 SEE STRUCT. DWGS. FOR FRAMING DETAILS



3 SECTION @ BACK PORCH
 SEE STRUCT. DWGS. FOR FRAMING DETAILS.
 SEE DWG. A16 FOR DETAIL KEY NOTES.

4 SECTION @ FRONT PORCH
 SEE STRUCT. DWGS. FOR FRAMING DETAILS.
 SEE DWG. A16 FOR DETAIL KEY NOTES.

2 SECTION @ SIDE YARD ADDITION
 SEE STRUCT. DWGS. FOR FRAMING DETAILS
 SEE DWG. A16 FOR DETAIL KEY NOTES.



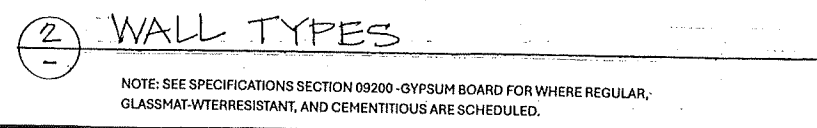
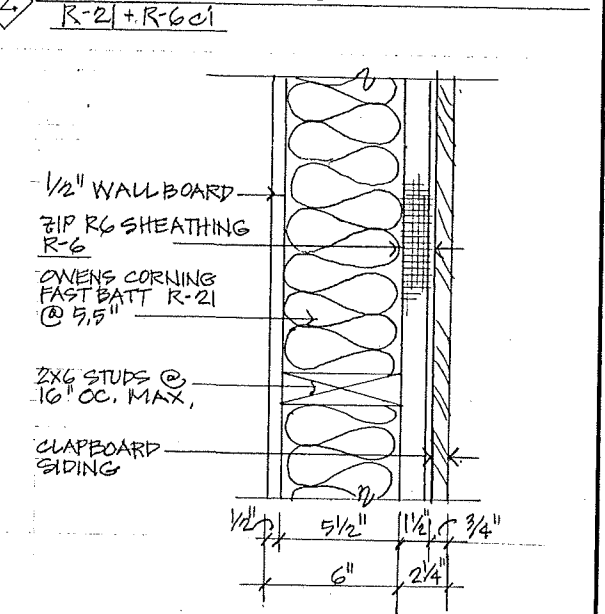
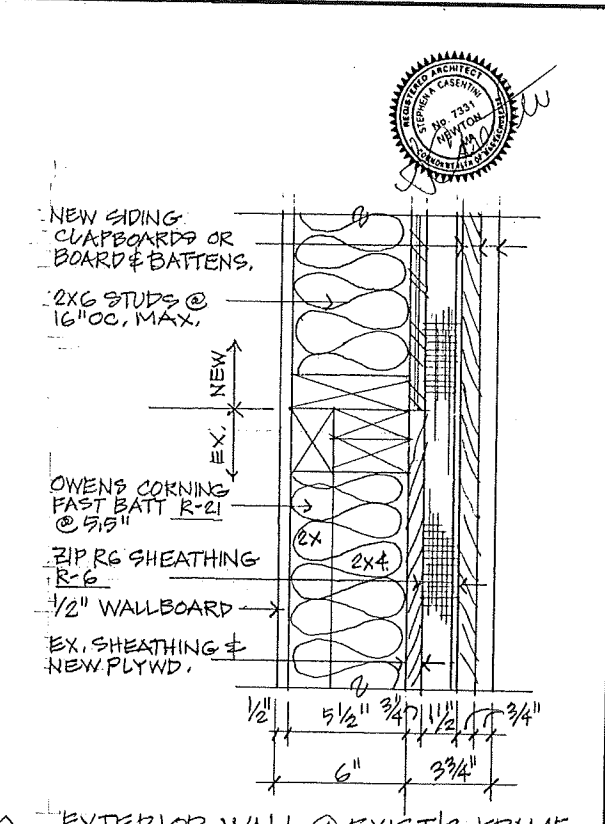
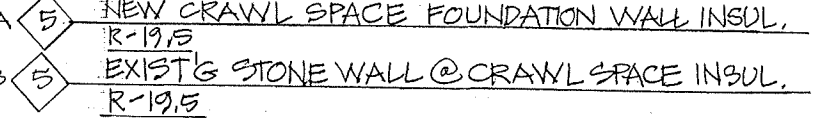
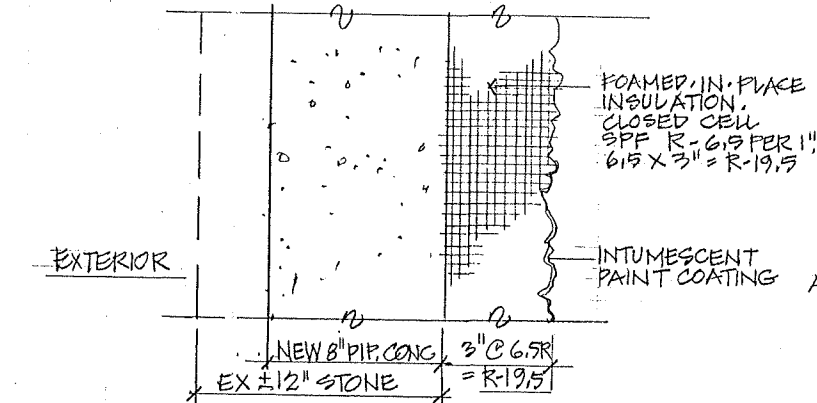
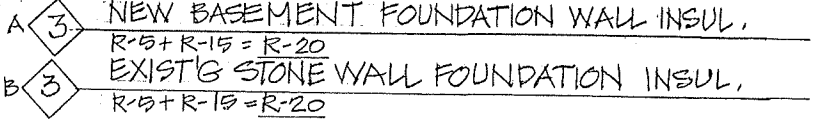
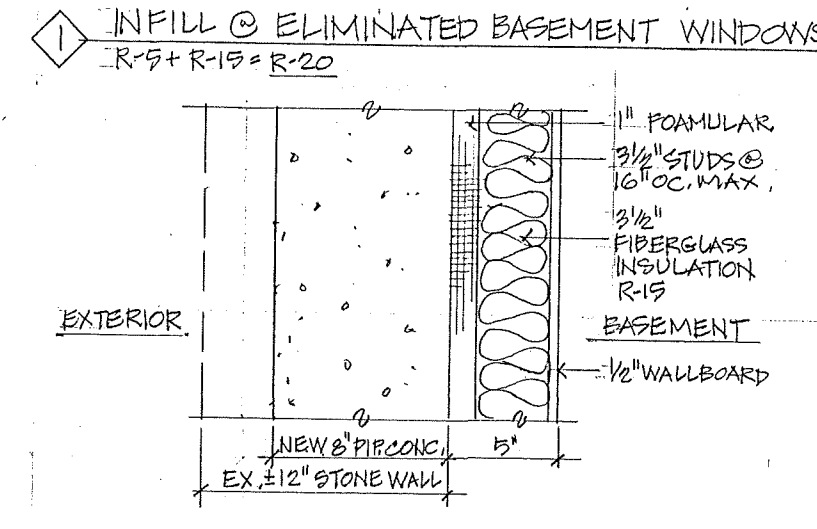
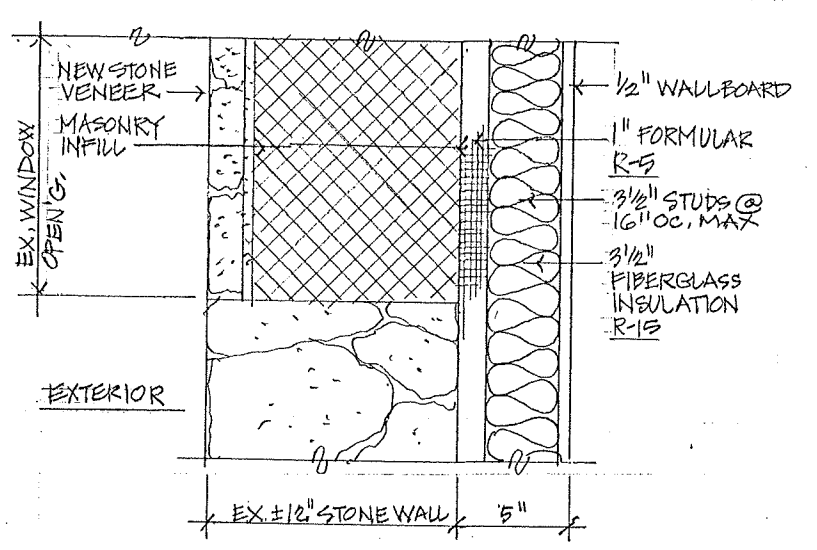
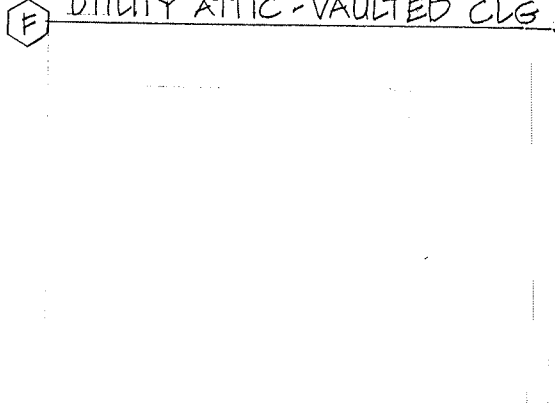
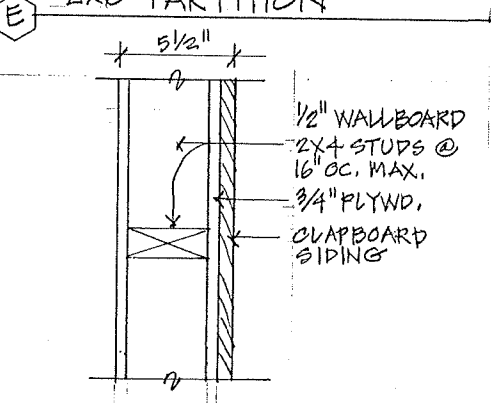
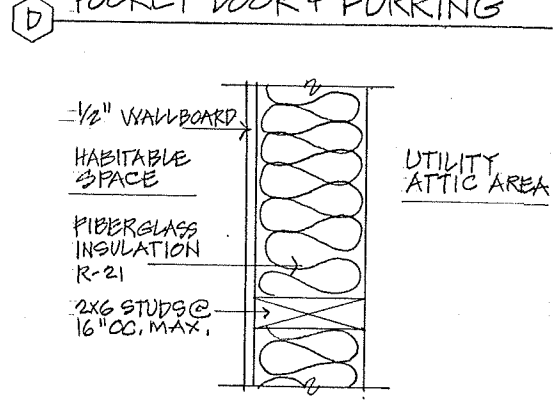
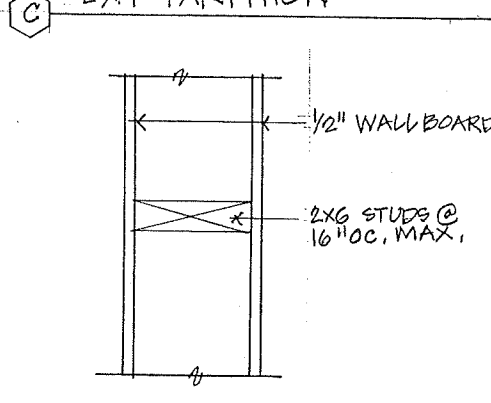
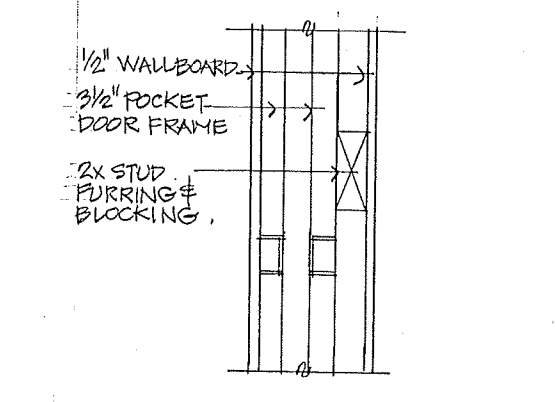
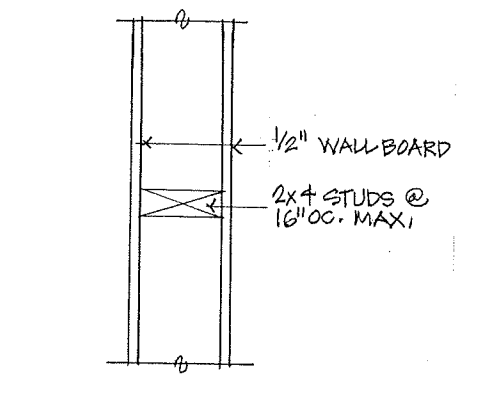
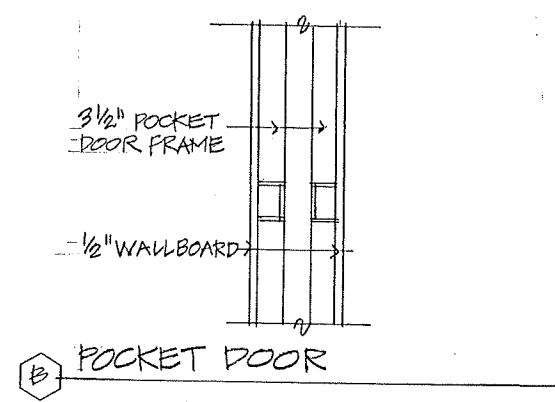
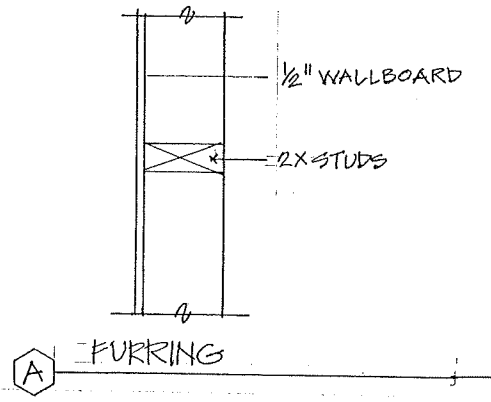
| REVISIONS | BY |
|-----------|----|
| | |
| | |
| | |
| | |
| | |

Casentini Incorporated
planning architecture interior design
11 Waverley Avenue
Newton, MA 02458
t 617 467 5072

Donovan Residence
Renovations & Additions
62 Crest Street
Concord, MA 01742

BUILDING SECTION / DETAILS

Date 12.26.25
Scale
Drawn 3/11/2011
Job
Sheet A15
Of Sheets



| REVISIONS | BY |
|-----------|----|
| | |
| | |
| | |
| | |

Casentini Incorporated
planning architecture interior design
11 Waverley Avenue
Newton, MA 02458
t 617 467 5072

Donovan Residence
Renovations & Additions
62 Crest Street
Concord, MA 01742

EXTERIOR WALL ASSEMBLIES / PARTITION TYPES / DETAILS

Date 12.26.25
Scale 3/8" = 1'-0"
Drawn
Job
Sheet
A16
Of Sheets

NOTE: SEE SPECIFICATIONS SECTION 09200 - GYPSUM BOARD FOR WHERE REGULAR, GLASSMAT-WATERRESISTANT, AND CEMENTITIOUS ARE SCHEDULED.

NOTE: SEE SPECIFICATIONS SECTION 09200 - GYPSUM BOARD FOR WHERE REGULAR, GLASSMAT-WATERRESISTANT, AND CEMENTITIOUS ARE SCHEDULED.