

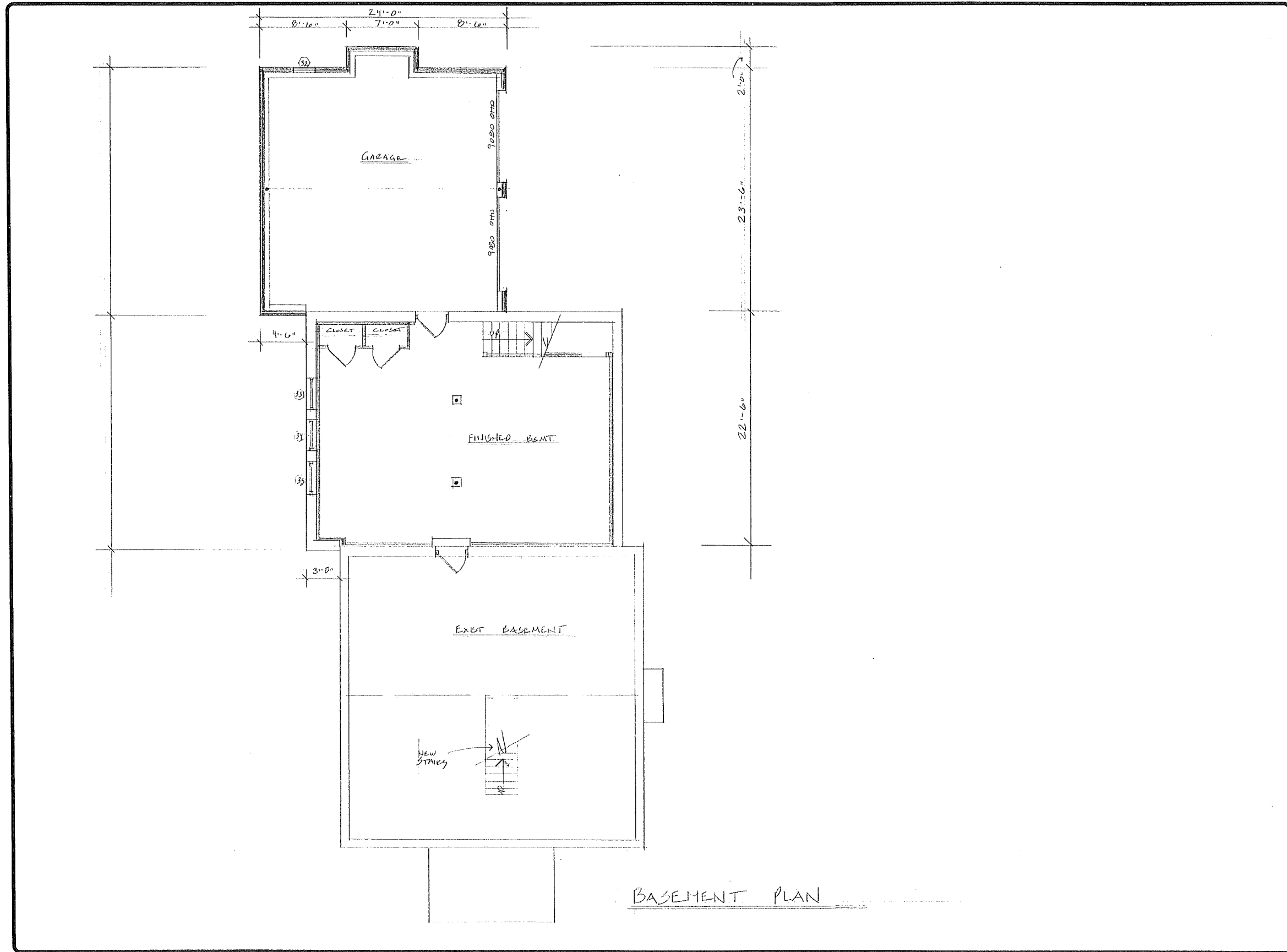
SQUARE FOOTAGE	
<u>EXISTING</u>	
FIRST FLOOR	848
SECOND FLOOR	848
TOTAL HOUSE	1696 #
GARAGE	642 #
TOTAL	2338 #
<u>PROPOSED</u>	
FIRST FLOOR	2095 #
SECOND FLOOR	1922 #
TOTAL	4017 #
GARAGE (IN BASEMENT)	576 #
NEW BSMT	671 #
EXIST BSMT	848 #
MAX ALLOWABLE FAR	666.42 #

REVISIONS	BY

Elise Braceras Stone, Architects
 288 Old Marlboro Road, Concord, MA 01746
 (978) 366-6559

**93 MONUMENT ST
 CONCORD, MA
 FIRST FLOOR PLAN**

DRAWN
CHECKED
DATE 1/15/26
SCALE 1/4" = 1'-0"
JOB NO.
SHEET A-1
OF SHEETS



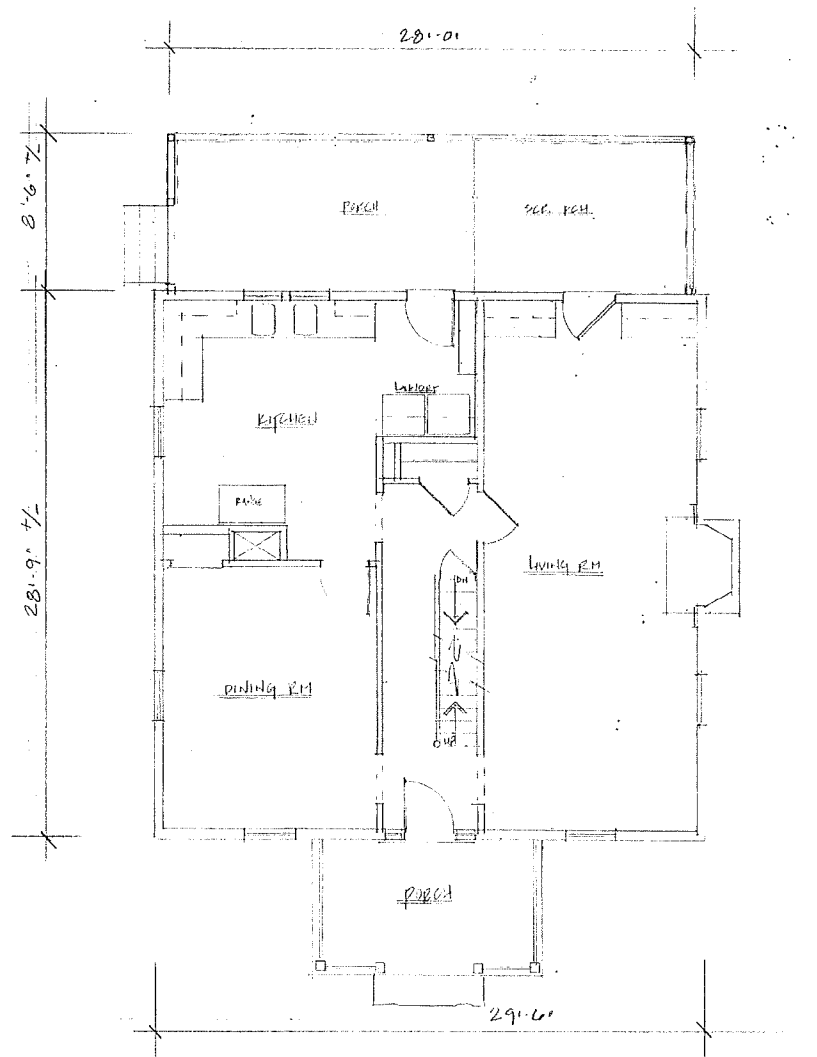
BASEMENT PLAN

REVISIONS	BY

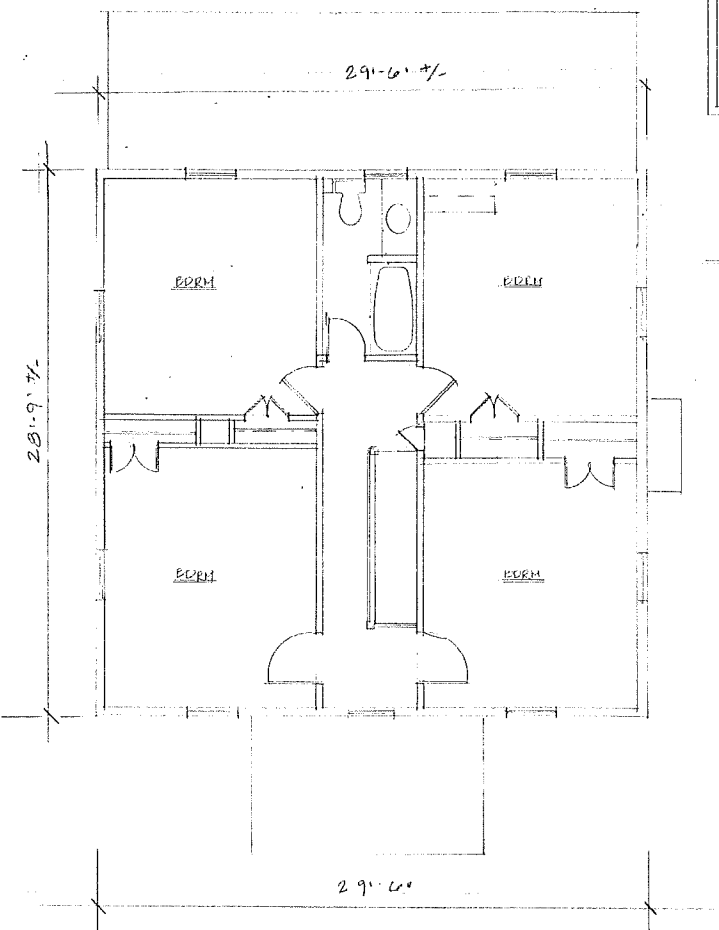
Elise Braceras Stone, Architects
 288 Old Marlboro Road, Concord, MA elstone@comcast.net
 (617) 306-6359

83 MONUMENT ST.
 CONCORD MA
 BSMT PLAN

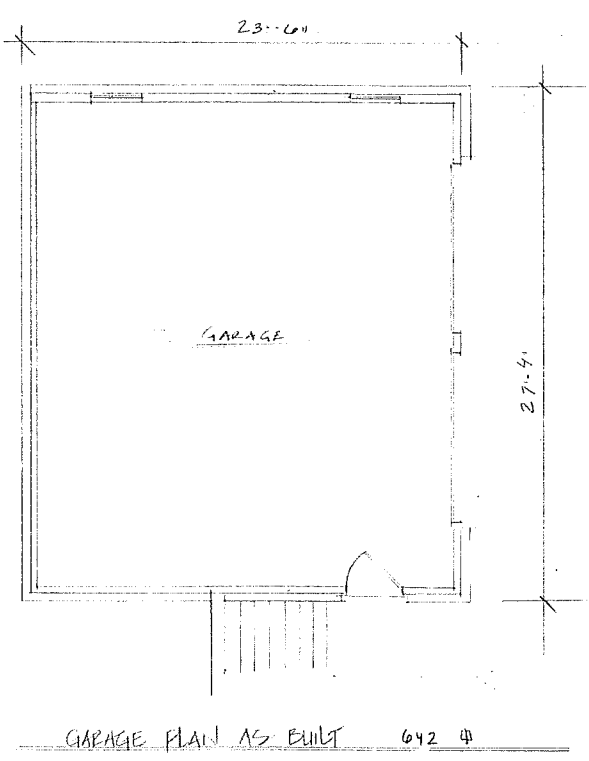
DRAWN
CHECKED
DATE 1/15/26
SCALE 1/4" = 1'-0"
JOB NO.
SHEET A-3
OF SHEETS



FIRST FLOOR PLAN AS BUILT 848 4



SECOND FLOOR PLAN AS BUILT 848 4



GARAGE PLAN AS BUILT 642 4

REVISIONS	BY

Elise Braccas Stone, Architects
 288 Old Marlboro Road, Concord MA 01735
 (617) 306-6359
 elstone@comcast.net

288 MARLBORO RD
 CONCORD, MA
 FLOOR PLANS AS BUILT

DRAWN
CHECKED
DATE 1/15/26
SCALE 1/4" = 1'-0"
JOB NO.
SHEET A.6
OF SHEETS