



Article #40 Tree Preservation Bylaw General Bylaw Amendment

Ms. Whiting Cash moves:

that the Town take affirmative action on Article #40 as printed in the Warrant, except to strike the phrase in Section 4.1(c) “as defined by the Town of Concord Zoning Bylaw Section 7.1.5” and insert the phrase “excluding basements, open or screened porches and decks.”

Article #40
Tree Preservation Bylaw
General Bylaw Amendment

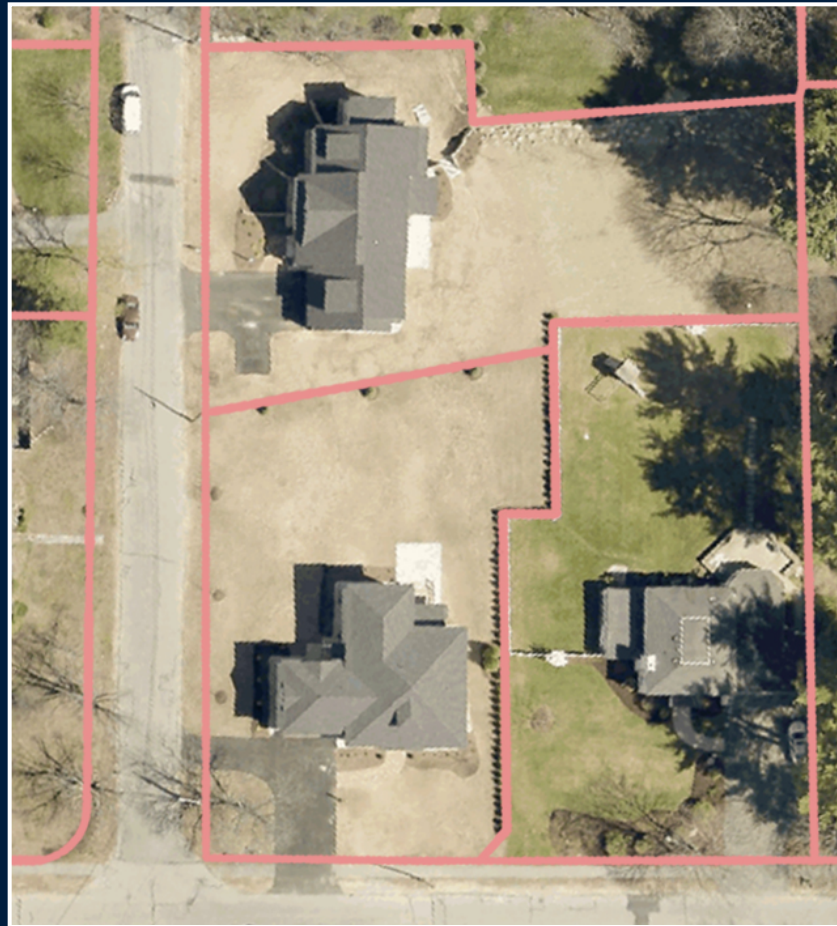
Why is the Planning Board proposing this Bylaw?

In response to citizen concern over the loss of mature trees on redeveloped lots (tear-downs) and properties with significant building expansions.

Article #40
Tree Preservation Bylaw
General Bylaw Amendment



Article #40
Tree Preservation Bylaw
General Bylaw Amendment



Article #40
Tree Preservation Bylaw
General Bylaw Amendment

When does the Bylaw apply?

1. Demolition of an existing structure of 250 gross square feet or greater;
2. Construction of any building or structure on a vacant lot; or
3. Construction of one or more structures or additions to structures on a lot that increases the Gross Floor Area by 50% or greater

Article #40
Tree Preservation Bylaw
General Bylaw Amendment

Unless you must obtain a Demolition or Building
Permit:

this Bylaw would **NOT** impact the trees
on your lot

Article #40
Tree Preservation Bylaw
General Bylaw Amendment

The intent of the Tree Preservation Bylaw is to:

- (a) Encourage saving and protecting existing trees on the edges of residential lots during significant construction activities or demolition
- (b) If trees are removed from these areas, require replanting on site or payments to support new tree planting and maintenance by the Town.

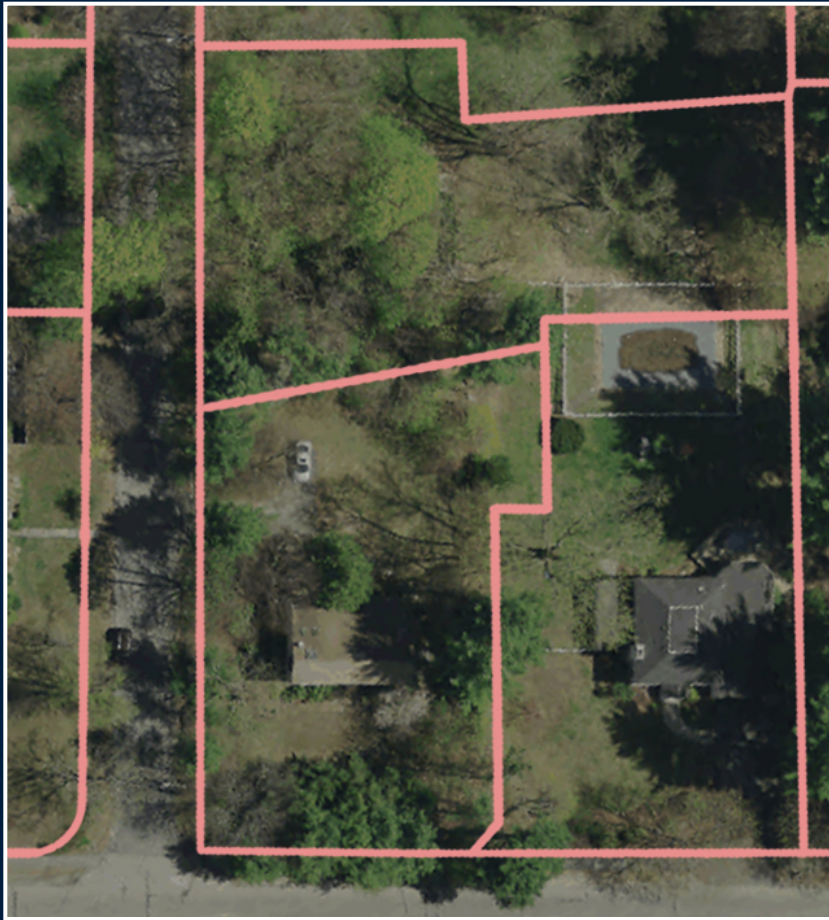
Article #40
Tree Preservation Bylaw
General Bylaw Amendment

Which trees on a residential lot are protected?

Tree Yard: Equivalent to the front, rear and side setbacks in the given Residential Zone District.

Protected Tree: Any existing tree with a Diameter at Breast Height (DBH) of six (6) inches or greater that has any portion of its trunk within a *Tree Yard* at grade level.

Article #40
Tree Preservation Bylaw
General Bylaw Amendment



Article #40
Tree Preservation Bylaw
General Bylaw Amendment

What is NOT a “Protected Tree”?

1. Trees in the interior of a lot, beyond setbacks
2. Invasive Species
3. Trees severely damaged by a natural disaster
4. Hazard trees¹
5. Trees infected by a disease or insect infestation of a permanent nature¹

¹ as determined by a Certified Arborist

Article #40
Tree Preservation Bylaw
General Bylaw Amendment

How might this Tree Bylaw affect someone tearing down an existing house and rebuilding a larger home on the lot?

Article #40
Tree Preservation Bylaw
General Bylaw Amendment

Example Mitigation for a new home on a wooded lot:

1 - 22" tree	= 22"	} <i>Protected Trees removed</i>
2 - 12" trees	= 24"	
1 - 10" tree	= 10"	
+ 3 - 8" trees	= 24"	
<hr/>		

TOTAL = 80" x \$375/inch = **\$30,000 Tree Fund Contribution**

-OR-

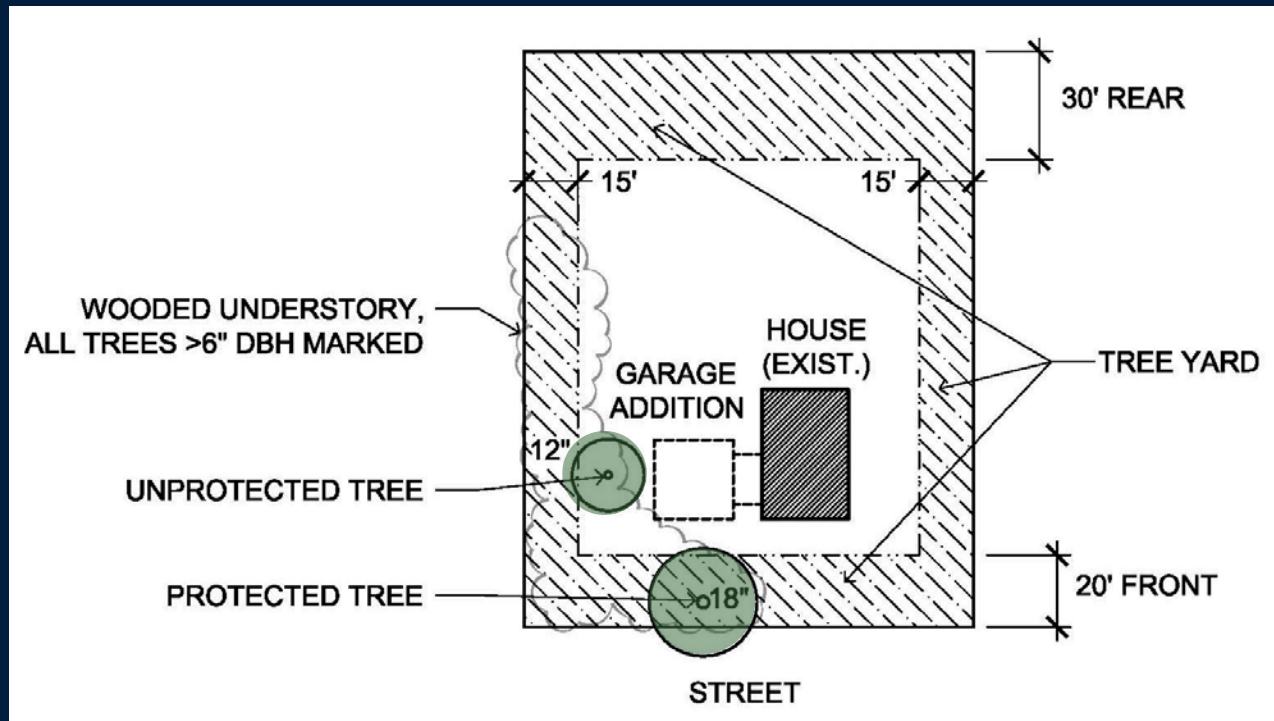
80" x 0.5 = 40" of replacement tree
(**10 – 4" caliper new trees**)

Article #40
Tree Preservation Bylaw
General Bylaw Amendment

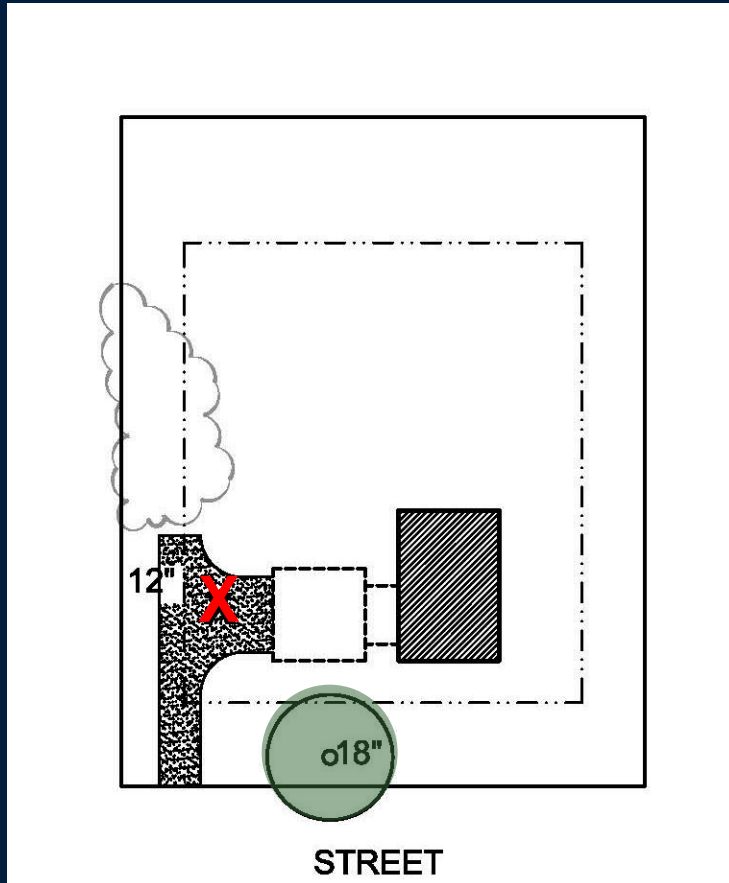
How might this Tree Bylaw affect me if I want to build a large addition on my existing lot?

Article #40
Tree Preservation Bylaw
General Bylaw Amendment

The following example shows a conforming Residential Zone B lot of 20,000 SF.



Article #40
Tree Preservation Bylaw
General Bylaw Amendment

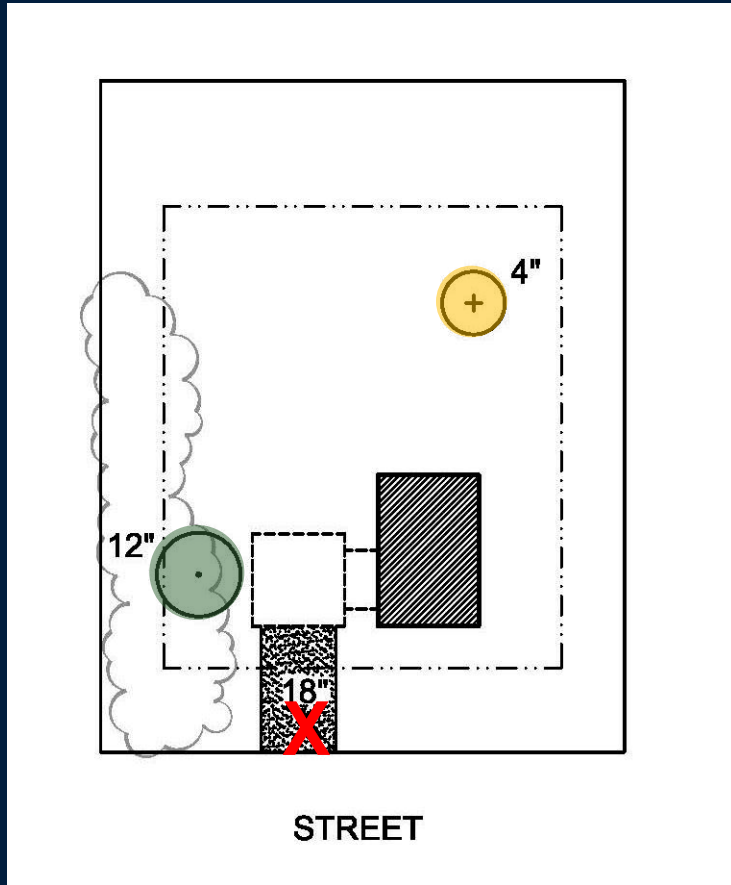


PRESERVE

Protected Trees removed = 0"

NO MITIGATION REQUIRED

Article #40
Tree Preservation Bylaw
General Bylaw Amendment



RE-PLANT & PAY

Protected Trees removed = 18"

Re-plant

(0.5" replace per 1.0" removed)

1 tree x 4" caliper = 4"

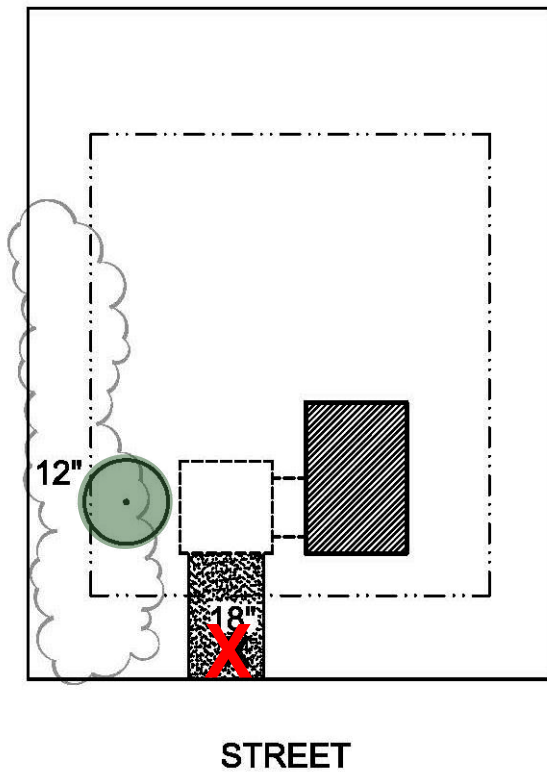
4" x 2 = 8"

Tree Fund Contribution

18" - 8" = 10"

10 x \$375 = \$3,750

Article #40
Tree Preservation Bylaw
General Bylaw Amendment



PAY

Protected Trees removed = 18"

Re-plant = 0

Tree Fund Contribution

$18 \times \$375 = \$6,750$



Article #40 Tree Preservation Bylaw General Bylaw Amendment

Ms. Whiting Cash moves:

that the Town take affirmative action on Article #40 as printed in the Warrant, except to strike the phrase in Section 4.1(c) “as defined by the Town of Concord Zoning Bylaw Section 7.1.5” and insert the phrase “excluding basements, open or screened porches and decks.”